

Werkzeugnis



Produkt: AL-Cu-Presskabelschuhe
für Aluminiumseile nach DIN 48201
und rundgedrückte Sektorleiter

Oberfläche: blank

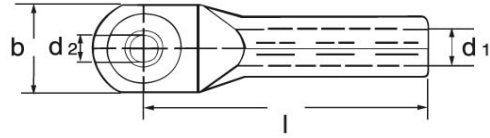
Artikel-Nr.: K 3500106 – K 3501320

Werkstoff: Al 99,5 ; Cu-ETP gemäß EN 13600

Bemerkung: RoHS-konform (EU-Richtlinie 2002/95/EC)

Eisenacher
Qualitätsmanagement





AL-Cu-Presskabelschuhe

Nennquerschnitt mm ²		Kennziffer	Nenn- größe	Artikel- Nummer	Abmessung (mm)				~kg 1000 St.	VE
rm / sm	se				d1	d2	b	l		
10		10	6 – 10	K 3500106	5,0	6,5	18,0	52,0	11,5	100
			8 – 10	K 3500108	5,0	8,5	22,0	52,0	14,5	100
16	25	12	8 – 16	K 3500208	5,8	8,5	22,0	52,0	19,5	100
			10 – 16	K 3500210	5,8	10,5	25,0	52,0	20,1	100
25	35	12	8 – 25	K 3500308	6,8	8,5	22,0	60,0	19,5	100
			10 – 25	K 3500310	6,8	10,5	25,0	60,0	21,0	100
35	50	14	10 – 35	K 3500410	8,0	10,5	26,0	67,0	30,0	100
			12 – 35	K 3500412	8,0	13,0	30,0	67,0	31,0	100
50	70	16	10 – 50	K 3500510	9,8	10,5	27,0	72,0	36,0	50
			12 – 50	K 3500512	9,8	13,0	30,0	72,0	38,0	50
70	95	18	10 – 70	K 3500610	11,2	10,5	29,0	86,0	56,0	50
			12 – 70	K 3500612	11,2	13,0	32,0	86,0	55,5	50
95	120	22	10 – 95	K 3500710	13,2	10,5	32,0	90,0	85,0	25
			12 – 95	K 3500712	13,2	13,0	35,0	90,0	85,0	25
			16 – 95	K 3500716	13,2	17,0	38,0	90,0	95,0	25
120	150	22	12 – 120	K 3500812	14,7	13,0	35,0	91,0	87,0	25
			16 – 120	K 3500816	14,7	17,0	38,0	91,0	88,0	25
150	185	25	12 – 150	K 3500912	16,3	13,0	35,0	103,0	109,0	25
			16 – 150	K 3500916	16,3	17,0	41,0	103,0	123,0	25
			20 – 150	K 3500920	16,3	21,0	44,0	103,0	130,0	25
185	240	28	12 – 185	K 3501012	18,3	13,0	40,0	106,0	150,0	20
			16 – 185	K 3501016	18,3	17,0	42,0	106,0	153,0	20
			20 – 185	K 3501020	18,3	21,0	46,0	106,0	166,0	20
240	300	32	12 – 240	K 3501112	21,0	13,0	45,0	116,0	200,0	15
			16 – 240	K 3501116	21,0	17,0	45,0	116,0	202,0	15
			20 – 240	K 3501120	21,0	21,0	49,0	116,0	210,0	15
300		34	16 – 300	K 3501216	23,3	17,0	51,0	124,0	226,0	10
			20 – 300	K 3501220	23,3	21,0	51,0	124,0	248,0	10
400		38	16 – 400	K 3501316	26,0	17,0	58,0	165,0	374,0	5
			20 – 400	K 3501320	26,0	21,0	58,0	165,0	379,0	5
				rm	=	round stranded				
				sm	=	sector stranded				
				se	=	sector solid				