

# Werkzeugnis



Produkt: AL-Cu-Presskabelschuhe  
längsdicht mit massiver Cu-Lasche,  
für Aluminiumseile nach DIN 48201  
und rundgedrückte Sektorleiter

Oberfläche: blank

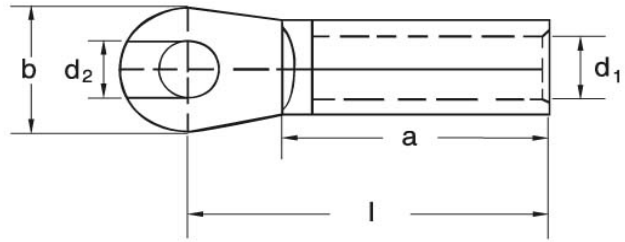
Artikel-Nr.: K 3502008 – K 3503020

Werkstoff: Al 99,5 ; Cu-ETP gemäß EN 13600

Bemerkung: RoHS-konform (EU-Richtlinie 2002/95/EC)

Eisenacher  
Qualitätsmanagement





### AL-Cu- Presskabelschuhe

Nennquerschnitt mm <sup>2</sup>		Kennziffer	Nenn- größe	Artikel- Nummer	Abmessung (mm)				~kg 1000 St.	VE
rm / sm	se				d1	d2	b	l		
16	25	12	8 – 16	K 3502008	5,4	8,5	25,0	63,5	28,0	100
			10 – 16	K 3502010	5,4	10,5	25,0	63,5	26,0	100
25	35	12	8 – 25	K 3502108	6,8	8,5	25,0	63,5	30,0	100
			10 – 25	K 3502110	6,8	10,5	25,0	63,5	28,0	100
			12 – 25	K 3502112	6,8	13,0	25,0	63,5	28,0	100
35	50	14	8 – 35	K 3502208	8,0	8,5	25,0	74,5	52,0	100
			10 – 35	K 3502210	8,0	10,5	25,0	74,5	48,0	100
			12 – 35	K 3502212	8,0	13,0	25,0	74,5	46,0	100
50	70	16	8 – 50	K 3502308	9,8	8,5	25,0	75,5	50,0	50
			10 – 50	K 3502310	9,8	10,5	25,0	75,5	48,0	50
			12 – 50	K 3502312	9,8	13,0	25,0	75,5	46,0	50
70	95	18	10 – 70	K 3502410	11,2	10,5	25,0	83,5	70,0	50
			12 – 70	K 3502412	11,2	13,0	25,0	83,5	65,0	50
95	120	22	10 – 95	K 3502510	13,2	10,5	25,0	86,5	148,0	25
			12 – 95	K 3502512	13,2	13,0	25,0	86,5	140,0	25
			16 – 95	K 3502516	13,2	17,0	30,0	91,0	134,0	25
120	150	22	12 – 120	K 3502612	14,7	13,0	30,0	92,0	136,0	25
			16 – 120	K 3502616	14,7	17,0	30,0	92,0	130,0	25
150	185	25	12 – 150	K 3502712	16,3	13,0	30,0	105,0	176,0	25
			16 – 150	K 3502716	16,3	17,0	30,0	105,0	168,0	25
			20 – 150	K 3502720	16,3	21,0	38,0	109,0	186,0	25
185	240	28	10 – 185	K 3502810	18,3	10,5	30,0	107,0	222,0	20
			12 – 185	K 3502812	18,3	13,0	30,0	107,0	220,0	20
			16 – 185	K 3502816	18,3	17,0	30,0	107,0	202,0	20
			20 – 185	K 3502820	18,3	21,0	38,0	111,0	224,0	20
240	300	32	10 – 240	K 3502910	21,0	10,5	38,0	120,0	320,0	10
			12 – 240	K 3502912	21,0	13,0	38,0	120,0	318,0	10
			16 – 240	K 3502916	21,0	17,0	38,0	120,0	310,0	10
			20 – 240	K 3502920	21,0	21,0	38,0	120,0	324,0	10
300		34	12 – 300	K 3503012	23,3	13,0	38,0	124,0	374,0	10
			16 – 300	K 3503016	23,3	17,0	38,0	124,0	354,0	10
			20 – 300	K 3503020	23,3	21,0	38,0	124,0	344,0	10
				rm	=	round stranded				
				sm	=	sector stranded				
				se	=	sector solid				