

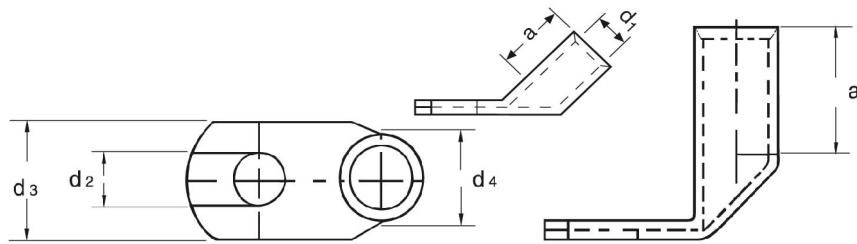
# Werkzeugnis



Produkt: Winkelpresskabelschuh, handelsüblich  
Oberfläche: - galv. verzinkt: 3 - 5 µm  
- wahlweise blank  
Artikel-Nr.: K 316005.. – K 317120..  
Norm: DIN 46235  
Werkstoff: Cu-ETP Rohr gemäß EN 13600  
Bemerkung: RoHS-konform (EU-Richtlinie 2002/95/EC)

Eisenacher  
Qualitätsmanagement





### Winkelpresskabelschuhe

mm <sup>2</sup>	Kennziffer	Nenngröße	Artikel-Nummer	Bestellcode	Abmessung (mm)					~kg 1000 St.	VE
					d2	d3	d4	a	d1		
6	5	5 – 6	K 316005	..	5,3	8,5	10,0	5,5	3,8	3,2	100
		6 – 6	K 316006	..	6,4	8,5	10,0	5,5	3,8	3,2	100
10	6	5 – 10	K 316105	..	5,3	9,0	10,0	6,0	4,5	3,6	100
		6 – 10	K 316106	..	6,4	9,0	10,0	6,0	4,5	3,5	100
		8 – 10	K 316108	..	8,4	13,0	10,0	6,0	4,5	3,9	100
16	8	6 – 16	K 316206	..	6,4	13,0	20,0	8,5	5,5	12,5	100
		8 – 16	K 316208	..	8,4	13,0	20,0	8,5	5,5	13,2	100
		10 – 16	K 316210	..	10,5	17,0	20,0	8,5	5,5	13,7	100
		12 – 16	K 316212	..	13,0	18,0	20,0	8,5	5,5	13,8	100
25	10	6 – 25	K 316306	..	6,4	14,0	20,0	10,0	7,0	15,6	100
		8 – 25	K 316308	..	8,4	16,0	20,0	10,0	7,0	16,7	100
		10 – 25	K 316310	..	10,5	17,0	20,0	10,0	7,0	16,6	100
		12 – 25	K 316312	..	13,0	19,0	20,0	10,0	7,0	17,3	100
35	12	8 – 35	K 316408	..	8,4	17,0	20,0	12,5	8,2	29,0	100
		10 – 35	K 316410	..	10,5	19,0	20,0	12,5	8,2	29,2	100
		12 – 35	K 316412	..	13,0	21,0	20,0	12,5	8,2	29,8	100
		14 – 35	K 316414	..	15,0	21,0	20,0	12,5	8,2	30,3	100
50	14	8 – 50	K 316508	..	8,4	20,0	28,0	14,5	10,0	46,1	100
		10 – 50	K 316510	..	10,5	22,0	28,0	14,5	10,0	45,8	100
		12 – 50	K 316512	..	13,0	24,0	28,0	14,5	10,0	45,8	100
		14 – 50	K 316514	..	15,0	24,0	28,0	14,5	10,0	47,3	100
		16 – 50	K 316516	..	17,0	28,0	28,0	14,5	10,0	46,9	100
70	16	8 – 70	K 316608	..	8,4	24,0	28,0	16,5	11,5	61,4	100
		10 – 70	K 316610	..	10,5	24,0	28,0	16,5	11,5	66,0	50
		12 – 70	K 316612	..	13,0	24,0	28,0	16,5	11,5	64,4	50
		14 – 70	K 316614	..	15,0	24,0	28,0	16,5	11,5	65,0	50
		16 – 70	K 316616	..	17,0	30,0	28,0	16,5	11,5	66,3	50
95	18	10 – 95	K 316710	..	10,5	28,0	35,0	19,0	13,5	91,8	50
		12 – 95	K 316712	..	13,0	28,0	35,0	19,0	13,5	92,7	50
		14 – 95	K 316714	..	15,0	28,0	35,0	19,0	13,5	90,6	50
		16 – 95	K 316716	..	17,0	32,0	35,0	19,0	13,5	91,8	50
120	20	10 – 120	K 316810	..	10,5	32,0	35,0	21,0	15,5	105,0	50
		12 – 120	K 316812	..	13,0	32,0	35,0	21,0	15,5	109,0	50
		14 – 120	K 316814	..	15,0	32,0	35,0	21,0	15,5	110,0	50
		16 – 120	K 316816	..	17,0	32,0	35,0	21,0	15,5	112,0	50
		20 – 120	K 316820	..	21,0	38,0	35,0	21,0	15,5	110,0	50
150	22	10 – 150	K 316910	..	10,5	34,0	35,0	23,5	17,0	150,0	25
		12 – 150	K 316912	..	13,0	34,0	35,0	23,5	17,0	152,0	25
		14 – 150	K 316914	..	15,0	34,0	35,0	23,5	17,0	156,0	25
		16 – 150	K 316916	..	17,0	34,0	35,0	23,5	17,0	157,0	25
		20 – 150	K 316920	..	21,0	40,0	35,0	23,5	17,0	157,0	25

185	25	10 – 185	K 317010	..	10,5	37,0	40,0	25,5	19,0	192,0	25
		12 – 185	K 317012	..	13,0	37,0	40,0	25,5	19,0	191,0	25
		14 – 185	K 317014	..	15,0	37,0	40,0	25,5	19,0	191,0	25
		16 – 185	K 317016	..	17,0	37,0	40,0	25,5	19,0	190,0	25
		20 – 185	K 317020	..	21,0	40,0	40,0	25,5	19,0	190,0	25
240	28	12 – 240	K 317112	..	13,0	42,0	40,0	29,0	21,5	252,0	25
		14 – 240	K 317114	..	15,0	42,0	40,0	29,0	21,5	257,0	25
		16 – 240	K 317116	..	17,0	42,0	40,0	29,0	21,5	253,0	25
		20 – 240	K 317120	..	21,0	45,0	40,0	29,0	21,5	256,0	25
		Winkel									
		90°		<b>0</b>							
		45°		<b>1</b>							