

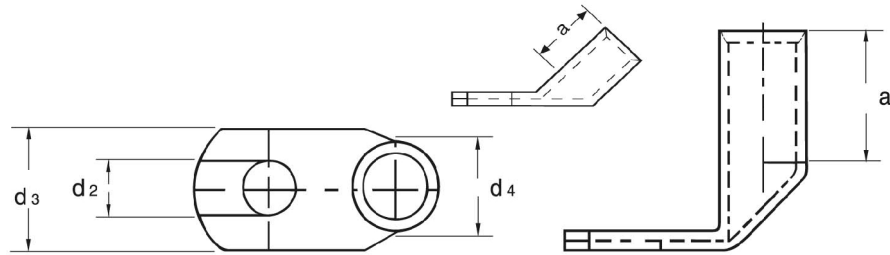
Werkzeugnis



Produkt: Winkelkabelschuh, handelsüblich
Oberfläche: galv. verzinkt: 3 - 5 µm
Artikel-Nr.: K 36005.. – K 37220..
Werkstoff: Cu-ETP Rohr gemäß EN 13600
Bemerkung: 90° oder 45° abgewinkelt
RoHS-konform (EU-Richtlinie 2002/95/EC)

Eisenacher
Qualitätsmanagement





Winkelkabelschuhe

mm ²	AWG	Nenngröße	Artikel- Nummer	Bestell- code	Abmessung (mm)				~kg 1000 St.	VE
					d2	d3	d4	a		
6	9	5 – 6	K 36005	..	5,3	10,0	6,5	10,0	6,0	100
		6 – 6	K 36006	..	6,4	12,0	6,5	10,0	6,2	100
		8 – 6	K 36008	..	8,4	15,0	6,5	10,0	6,4	100
10	7	6 – 10	K 36106	..	6,4	12,0	7,0	11,0	6,5	100
		8 – 10	K 36108	..	8,4	15,0	7,0	11,0	7,5	100
		10 – 10	K 36110	..	10,5	17,0	7,0	11,0	8,5	100
16	5	5 – 16	K 36205	..	5,5	12,0	8,5	15,0	9,4	100
		6 – 16	K 36206	..	6,4	12,0	8,5	15,0	9,5	100
		8 – 16	K 36208	..	8,4	15,0	8,5	15,0	10,5	100
		10 – 16	K 36210	..	10,5	19,0	8,5	15,0	14,0	100
		12 – 16	K 36212	..	13,0	20,0	8,5	15,0	11,0	100
25	3	6 – 25	K 36306	..	6,4	12,0	10,0	16,0	12,0	100
		8 – 25	K 36308	..	8,4	15,0	10,0	16,0	13,0	100
		10 – 25	K 36310	..	10,5	19,0	10,0	16,0	14,0	100
		12 – 25	K 36312	..	13,0	20,0	10,0	16,0	14,0	100
35	2	6 – 35	K 36406	..	6,4	15,0	12,0	18,0	20,0	100
		8 – 35	K 36408	..	8,4	17,0	12,0	18,0	20,5	100
		10 – 35	K 36410	..	10,5	19,0	12,0	18,0	21,0	100
		12 – 35	K 36412	..	13,0	20,0	12,0	18,0	21,5	100
50	1/0	8 – 50	K 36508	..	8,4	19,0	14,0	20,0	30,0	100
		10 – 50	K 36510	..	10,5	20,0	14,0	20,0	30,5	100
		12 – 50	K 36512	..	13,0	22,0	14,0	20,0	33,0	100
70	2/0	10 – 70	K 36610	..	10,5	22,0	16,5	21,0	42,0	100
		12 – 70	K 36612	..	13,0	24,0	16,5	21,0	43,0	100
		16 – 70	K 36616	..	17,0	26,0	16,5	21,0	43,5	100
95	3/0	10 – 95	K 36710	..	10,5	26,0	18,0	24,0	59,0	50
		12 – 95	K 36712	..	13,0	26,0	18,0	24,0	60,0	50
		16 – 95	K 36716	..	17,0	27,0	18,0	24,0	60,5	50
120	4/0	10 – 120	K 36810	..	10,5	29,0	19,5	28,0	73,0	50
		12 – 120	K 36812	..	13,0	29,0	19,5	28,0	73,0	50
		16 – 120	K 36816	..	17,0	29,0	19,5	28,0	73,0	50
150	5/0	10 – 150	K 36910	..	10,5	31,0	21,0	31,0	83,0	50
		12 – 150	K 36912	..	13,0	31,0	21,0	31,0	90,0	50
		16 – 150	K 36916	..	17,0	31,0	21,0	31,0	94,0	50
185	6/0	10 – 185	K 37010	..	10,5	34,0	24,0	32,0	120,0	50
		12 – 185	K 37012	..	13,0	34,0	24,0	32,0	120,0	50
		16 – 185	K 37016	..	17,0	35,0	24,0	32,0	118,0	50
		20 – 185	K 37020	..	21,0	35,0	24,0	32,0	118,5	50

240	7/0	10 – 240	K 37110	..	10,5	38,0	26,0	36,0	145,0	50
		12 – 240	K 37112	..	13,0	38,0	26,0	36,0	145,0	50
		16 – 240	K 37116	..	17,0	38,0	26,0	36,0	145,0	50
		20 – 240	K 37120	..	21,0	39,0	26,0	36,0	140,0	50
300	8/0	12 – 300	K 37212	..	13,0	40,0	28,0	44,0	236,0	25
		16 – 300	K 37216	..	17,0	40,0	28,0	44,0	234,0	25
		20 – 300	K 37220	..	21,0	41,0	28,0	44,0	230,0	25
Winkel										
90°				0						
45°				1						