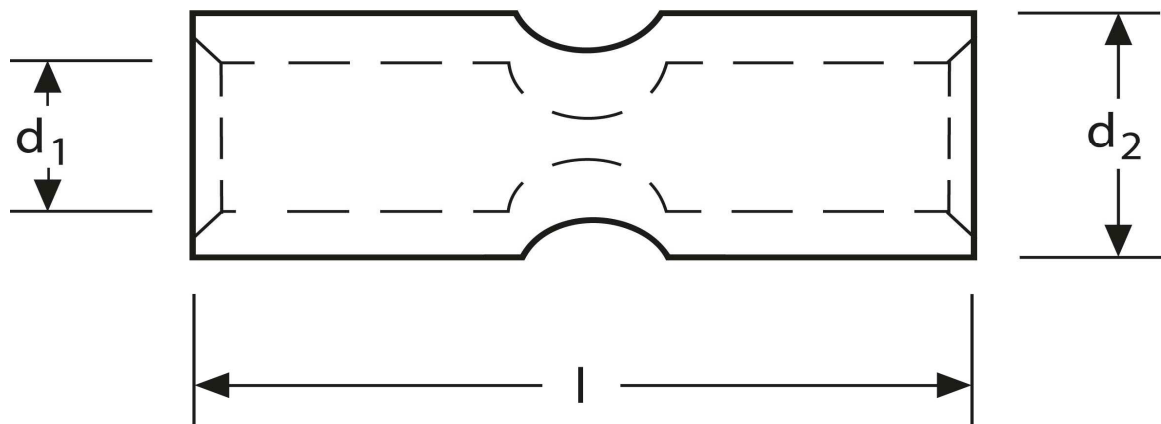


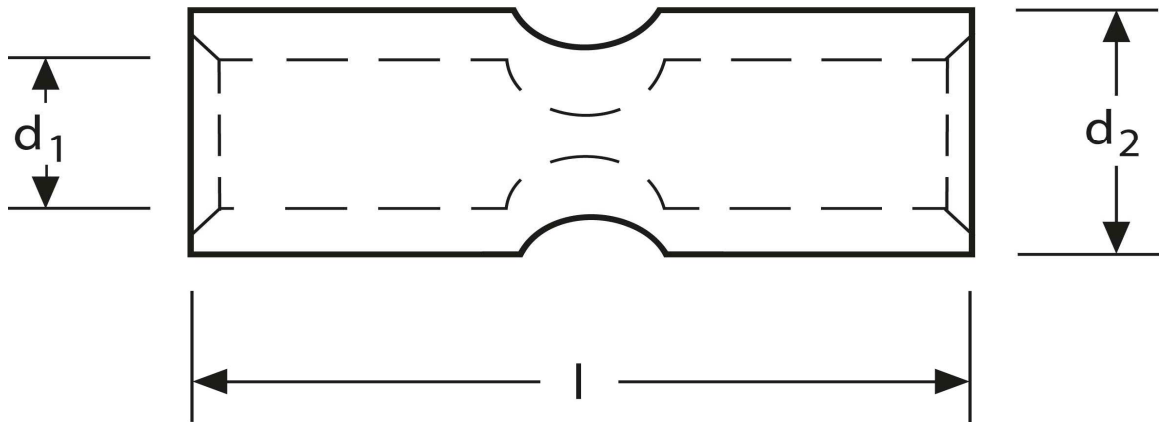
Kerbverbinder 95 mm²



Art.Nr.	Werkstoff	Oberfläche		
KV 332095	E-CU	galv. Sn	59,1 / 1000	25
	d₁	l	d₂	s
in mm:	13,5	60	18,0	2,3

Stand: 09.09.2014

Connectors
 95 mm²



part no.	material	surface		
KV 332095	E-CU	tin-plated	59,1 / 1000	25
	d_1	l	d_2	s
in mm:	13,5	60	18,0	2,3

date: 09.09.2014