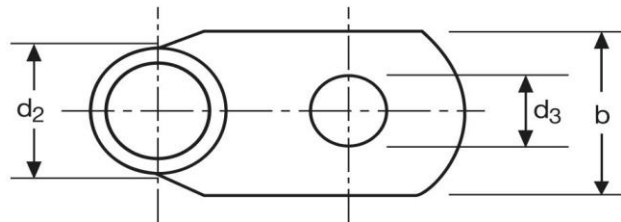
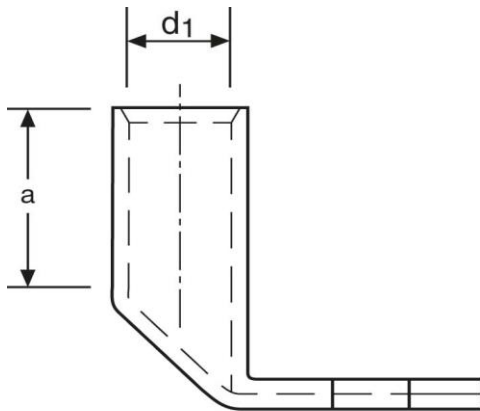


Winkelkabelschuhe

90° abgewinkelt

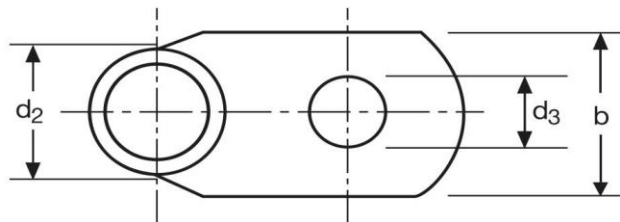
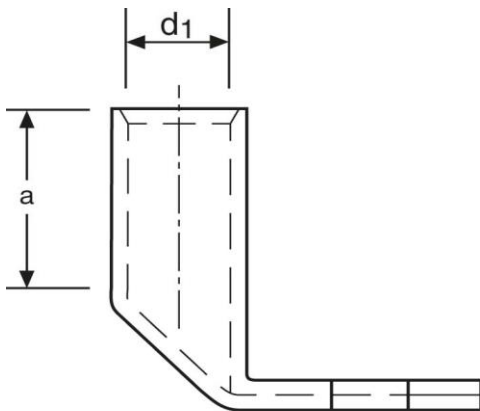
185 mm² M10



Art.Nr.	Werkstoff	Oberfläche		
K370100	E-CU	galv. Sn	121,7/1.000	10
	d₃	b	a	
in mm:	10,5	35	30	
	d₁	d₂		
in mm:	19	24		

Stand: 06.06.2017

Angled cable-lugs
90° angle
185 mm² M10



part no.	material	surface		
K370100	E-CU	tin-plated	121,7/1.000	10
	d₃	b	a	
in mm:	10,5	35	30	
	d₁	d₂		
in mm:	19	24		

date: 06.06.2017