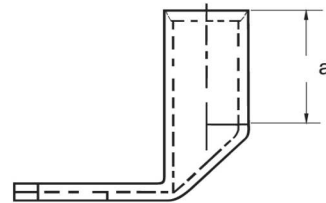
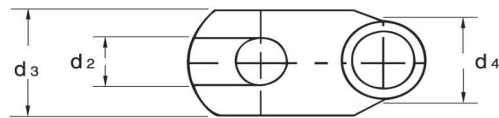
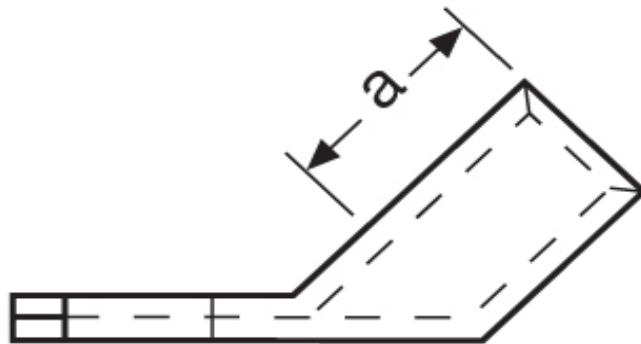


**Eisenacher**  
elektroTECHNIK GmbH

**Kabel-Anschluss- und Verbindungstechnik**

**Winkelkabelschuhe**  
150,00 mm<sup>2</sup>



Katalogseite: 2.18 - 2. 19

Art.Nr.	Werkstoff	Oberfläche			
K369161	E-CU	galv. Sn	94,00/1000	50	
	d2	d3	d4	a	Winkel
in mm:	17,0	31,0	21,0	31,0	45°