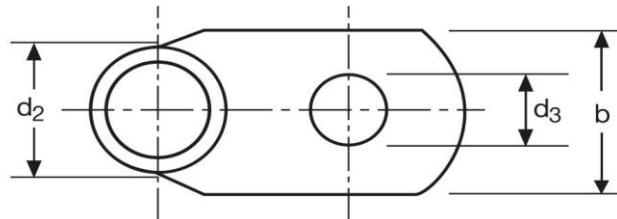
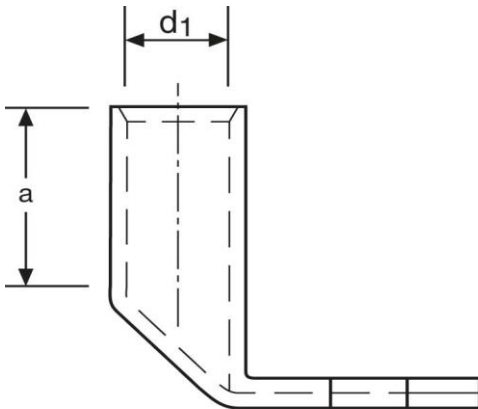


## Winkelkabelschuhe

90° abgewinkelt

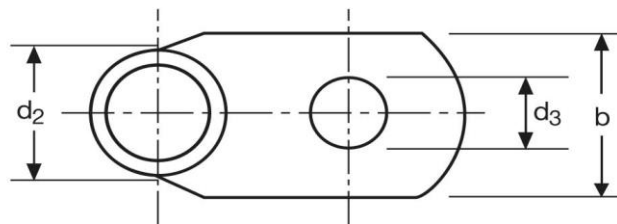
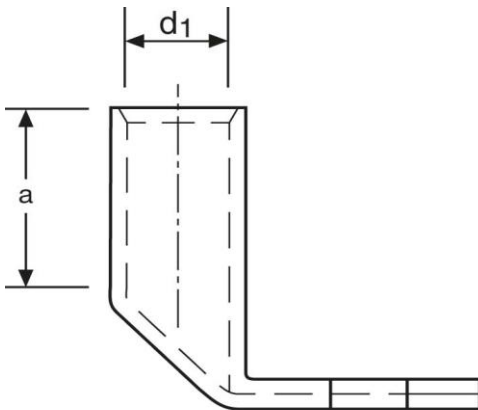
50 mm<sup>2</sup> M16



Art.Nr.	Werkstoff	Oberfläche		
K365160	E-CU	galv. Sn	35,8/ 1000	25
	<b>d<sub>3</sub></b>	<b>b</b>	<b>a</b>	
<b>in mm:</b>	17,0	28	19	
	<b>d<sub>1</sub></b>	<b>d<sub>2</sub></b>		
<b>in mm:</b>	10,0	14,0		

Stand: 20.06.2018

**Angled cable-lugs**  
 90° angle  
 50 mm<sup>2</sup> M16



part no.	material	surface		
K365160	E-CU	tin-plated	35,8/ 1000	25
	<b>d<sub>3</sub></b>	<b>b</b>	<b>a</b>	
<b>in mm:</b>	17,0	28	19	
	<b>d<sub>1</sub></b>	<b>d<sub>2</sub></b>		
<b>in mm:</b>	10,0	14,0		

date: 20.06.2018