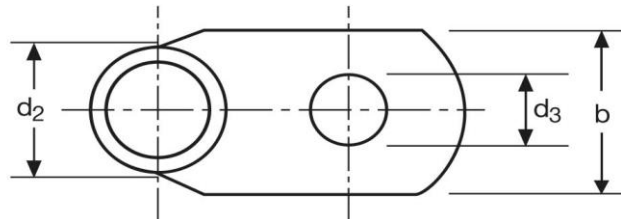
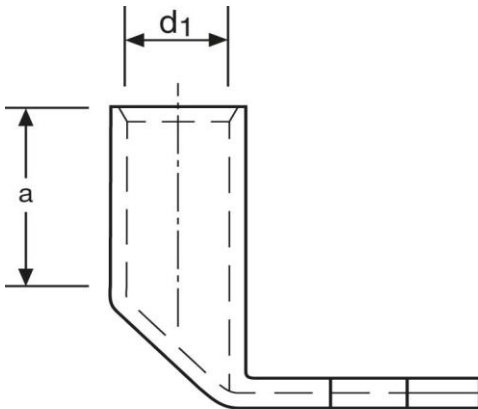


Winkelkabelschuhe

90° abgewinkelt

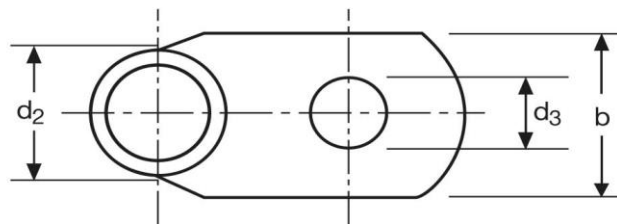
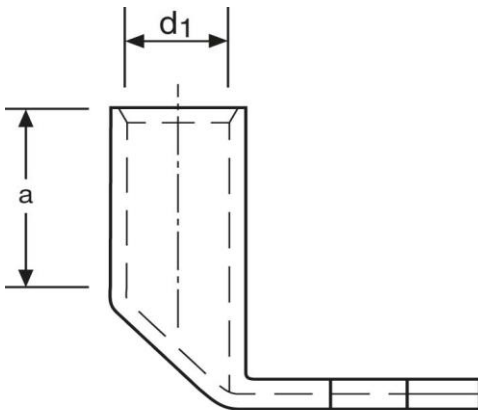
50 mm² M8



Art.Nr.	Werkstoff	Oberfläche		
K365080	E-CU	galv. Sn	32,8/ 1000	25
	d₃	b	a	
in mm:	8,5	20	19	
	d₁	d₂		
in mm:	10,0	14,0		

Stand: 20.06.2018

Angled cable-lugs
90° angle
50 mm² M8



part no.	material	surface		
K365080	E-CU	tin-plated	32,8/ 1000	25
	d₃	b	a	
in mm:	8,5	20	19	
	d₁	d₂		
in mm:	10,0	14,0		

date: 20.06.2018