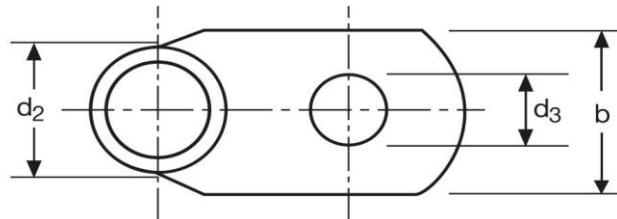
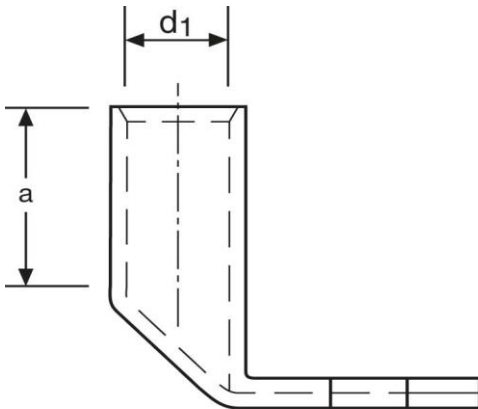


Winkelkabelschuhe

90° abgewinkelt

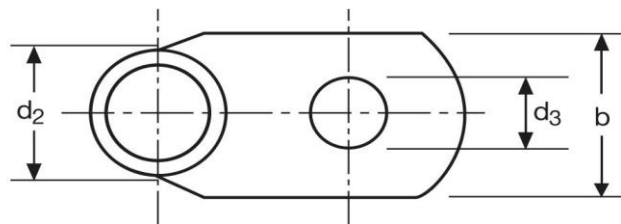
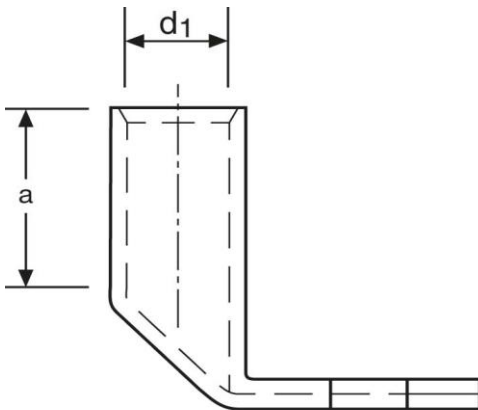
35 mm² M10



Art.Nr.	Werkstoff	Oberfläche		
K364100	E-CU	galv. Sn	22,8/ 1000	25
	d₃	b	a	
in mm:	10,5	19	17	
	d₁	d₂		
in mm:	8,5	12,0		

Stand: 18.06.2018

Angled cable-lugs
90° angle
35 mm² M10



part no.	material	surface		
K364100	E-CU	tin-plated	22,8/ 1000	25
	d₃	b	a	
in mm:	10,5	19	17	
	d₁	d₂		
in mm:	8,5	12,0		

date: 18.06.2018