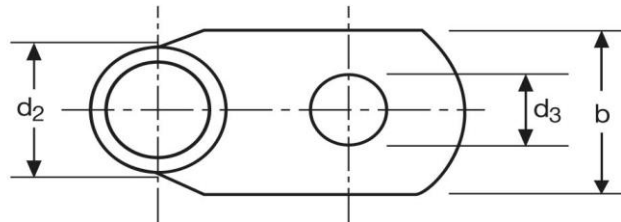
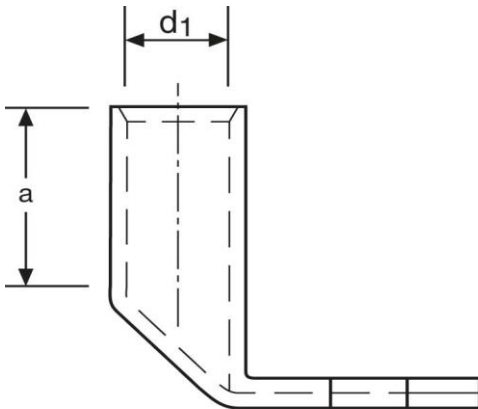


## Winkelkabelschuhe

90° abgewinkelt

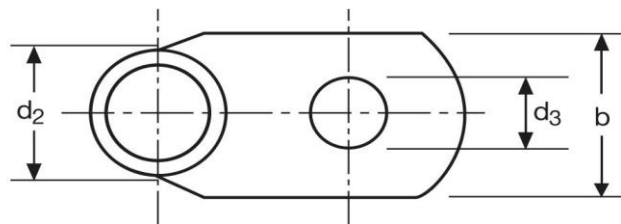
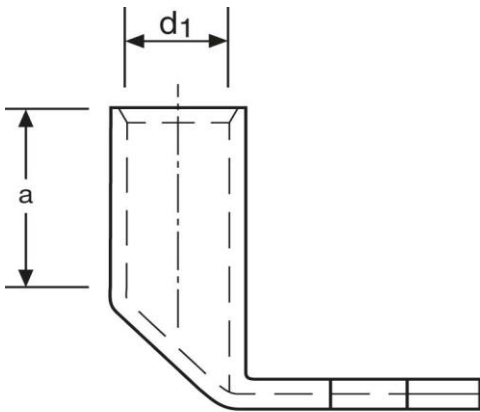
25 mm<sup>2</sup> M8



Art.Nr.	Werkstoff	Oberfläche		
K363080	E-CU	galv. Sn	14,4/ 1000	25
	<b>d<sub>3</sub></b>	<b>b</b>	<b>a</b>	
<b>in mm:</b>	8,5	16	15	
	<b>d<sub>1</sub></b>	<b>d<sub>2</sub></b>		
<b>in mm:</b>	7,0	10,0		

Stand: 18.06.2018

**Angled cable-lugs**  
90° angle  
25 mm<sup>2</sup> M8



part no.	material	surface		
K363080	E-CU	tin-plated	14,4/ 1000	25
	<b>d<sub>3</sub></b>	<b>b</b>	<b>a</b>	
<b>in mm:</b>	8,5	16	15	
	<b>d<sub>1</sub></b>	<b>d<sub>2</sub></b>		
<b>in mm:</b>	7,0	10,0		

date: 18.06.2018