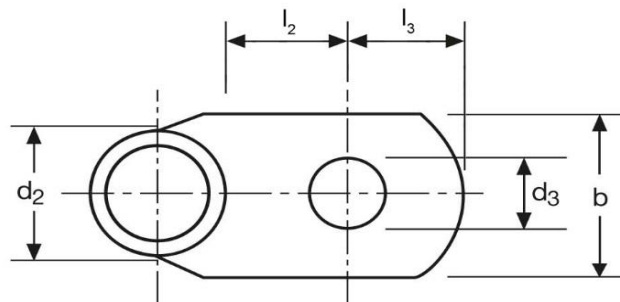
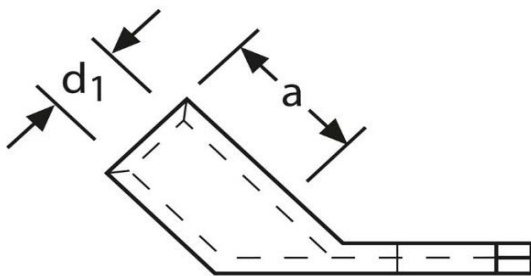


Winkelkabelschuhe

45° abgewinkelt

16 mm² M10

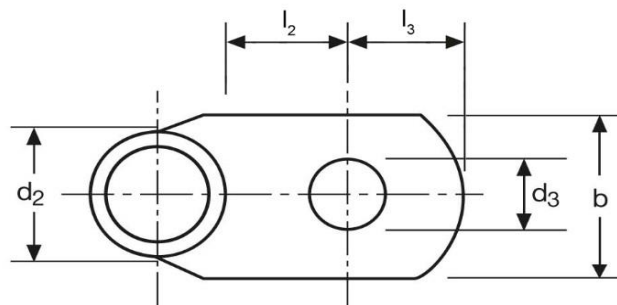
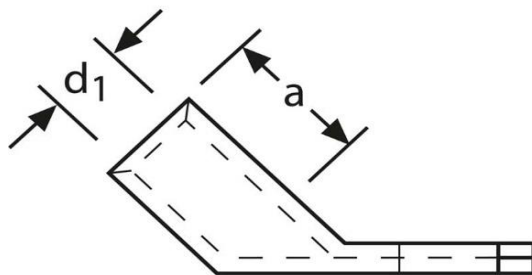


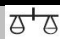

Art.Nr.	Werkstoff	Oberfläche		
K362101	E-CU	galv. Sn	10,9/ 1000	50
	d ₃	b	a	
in mm:	10,5	17	13	
	d ₁	d ₂	l ₂	l ₃
in mm:	5,5	8,5	15,0	12,0

Stand: 06.09.2019

Angled cable-lugs

45° angle
16 mm² M10



part no.	material	surface		
K362101	E-CU	tin-plated	10,9/ 1000	50
	d₃	b	a	
in mm:	10,5	17	13	
	d₁	d₂	l₂	l₃
in mm:	5,5	8,5	15,0	12,0

date: 06.09.2019