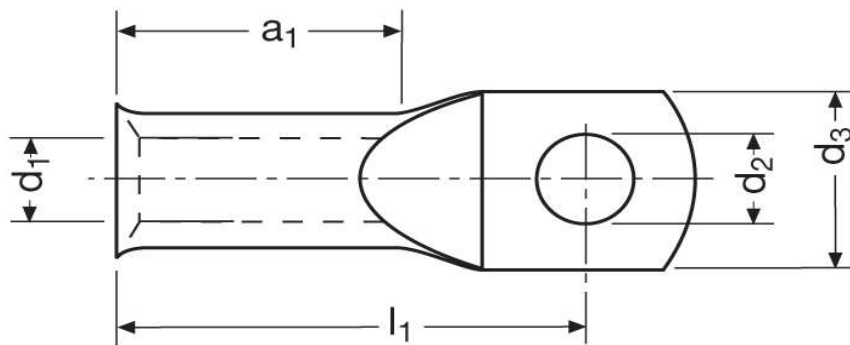


Rohrkabelschuhe, feindrätig
70,00 mm²



Katalogseite: 2.16 - 2.17

Art.Nr.	Werkstoff	Oberfläche			
K 356160	E-CU	galv. Sn	42,00/1000	25	
	d2	d3	l1	a1	d1
in mm:	17,0	24,0	54,0	27,5	13,1