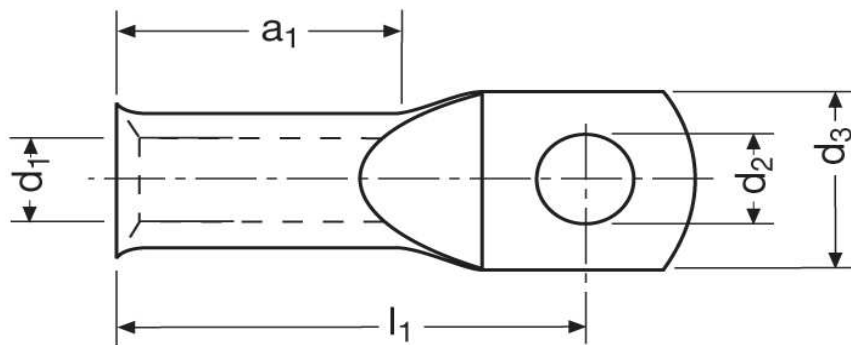


**Rohrkabelschuhe, feindrätig**  
50,00 mm<sup>2</sup>



Katalogseite: 2.16 - 2.17

Art.Nr.	Werkstoff	Oberfläche			
K 355120	E-CU	galv. Sn	32,00/1000	25	
	d2	d3	l1	a1	d1
in mm:	13,0	21,0	45,5	21,5	11,0