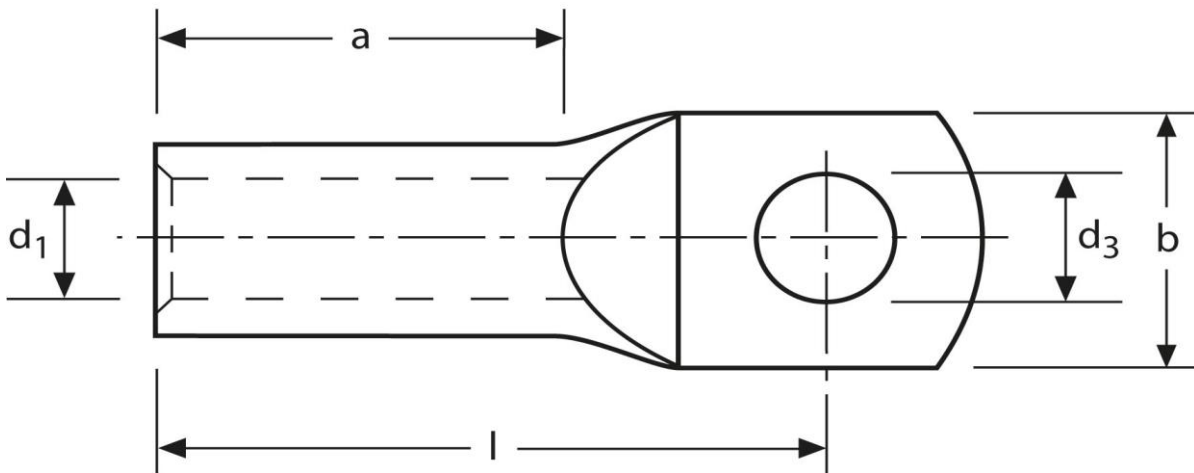


Rohrkabelschuhe

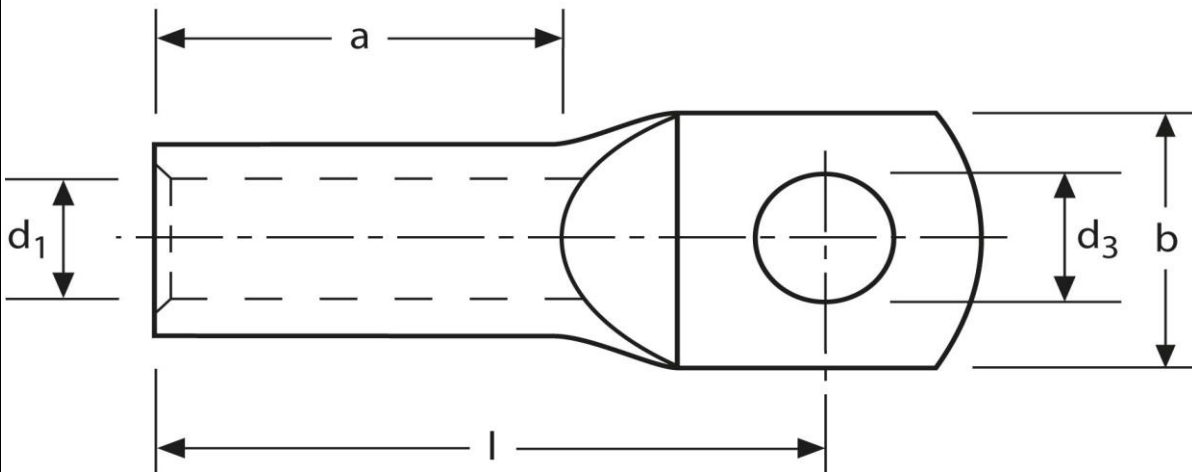
handelsüblich
 300 mm² M16



Art.Nr.	Werkstoff	Oberfläche	⚖️	📦
K 347160	E-CU	galv. Sn	227,4 / 1000	5
	d ₃	d ₁	b	
in mm:	17,0	24,0	43	
	l	a		
in mm:	82,5	45		

Stand: 20.11.2014

Tubular cable-lugs
commercial
300 mm² M16



part no.	material	surface		
K 347160	E-CU	tin-plated	227,4 / 1000	5
	d₃	d₁	b	
in mm:	17	24,0	43	
	l	a		
in mm:	82,5	45		

date: 20.11.2014