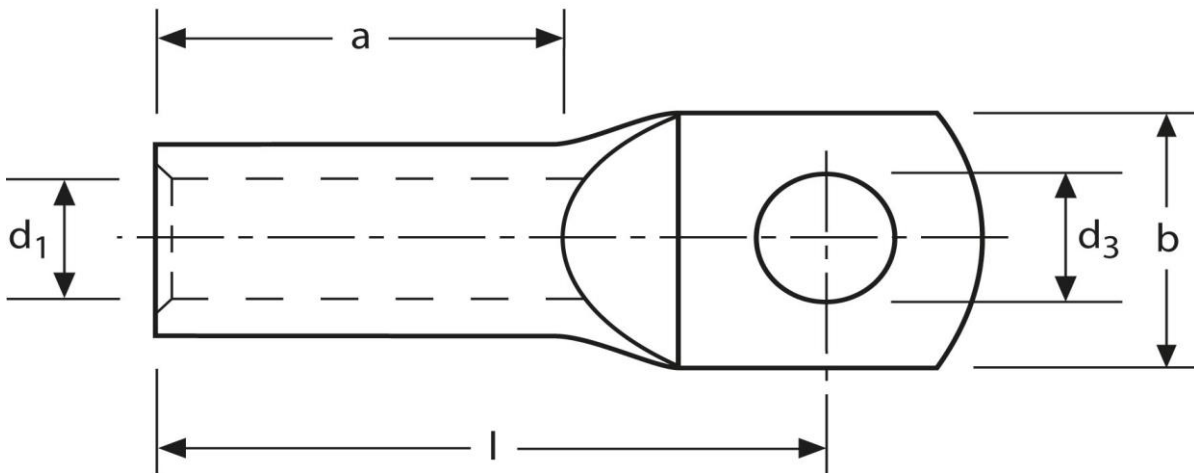


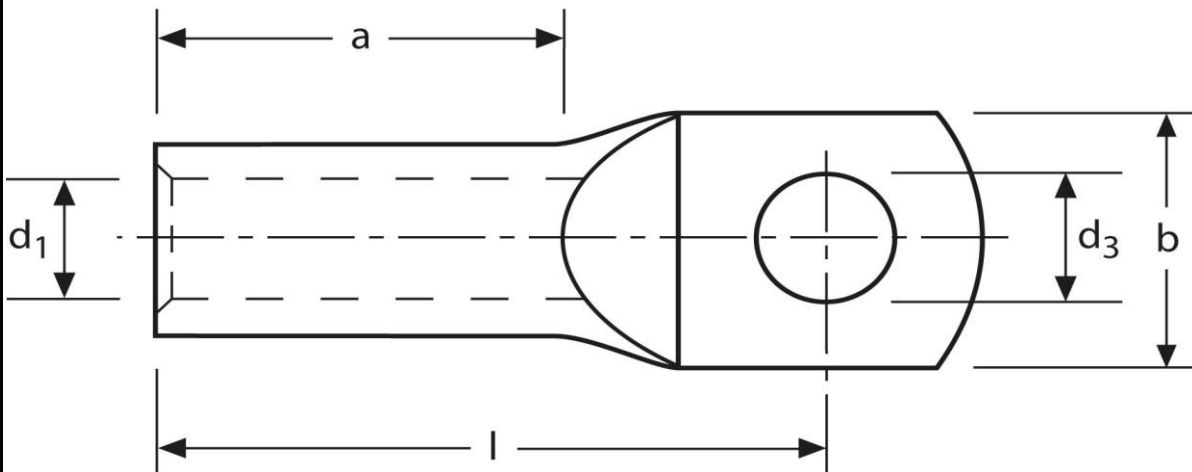
**Rohrkabelschuhe**  
 handelsüblich, mit Sichtloch  
 70 mm<sup>2</sup> M10



Art.Nr.	Werkstoff	Oberfläche		
K341100 II	E-CU	galv. Sn	44,6 / 1000	50
	<b>d<sub>3</sub></b>	<b>d<sub>1</sub></b>	<b>b</b>	
<b>in mm:</b>	10,5	12,0	23,0	
	<b>l</b>	<b>a</b>		
<b>in mm:</b>	42,5	21		

Stand: 06.04.2017

**Tubular cable-lugs**  
commercial, with inspection hole  
70 mm<sup>2</sup> M10



part no.	material	surface		
K341100 II	E-CU	tin-plated	44,6 / 1000	50
	<b>d<sub>3</sub></b>	<b>d<sub>1</sub></b>	<b>b</b>	
<b>in mm:</b>	10,5	12,0	23,0	
	<b>l</b>	<b>a</b>		
<b>in mm:</b>	42,5	21		

date: 06.04.2017