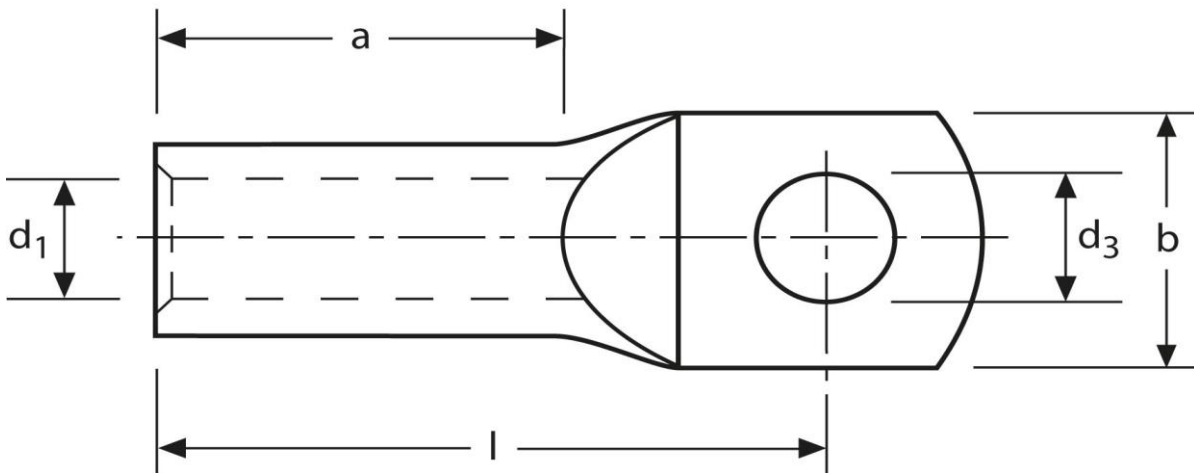


## Rohrkabelschuhe

handelsüblich

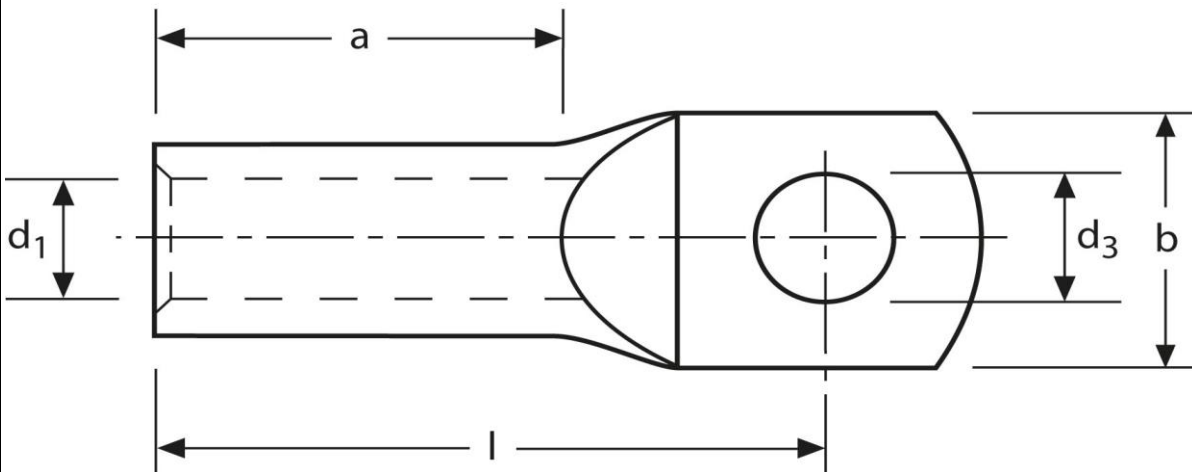
35 mm<sup>2</sup> M16



Art.Nr.	Werkstoff	Oberfläche		
K339160	E-CU	galv. Sn	23,0/ 1000	50
	<b>d<sub>3</sub></b>	<b>d<sub>1</sub></b>	<b>b</b>	
<b>in mm:</b>	17,0	8,5	26,0	
	<b>l</b>	<b>a</b>		
<b>in mm:</b>	39,5	17		

Stand: 13.11.2014

**Tubular cable-lugs**  
 commercial  
 35 mm<sup>2</sup> M16



part no.	material	surface		
K339160	E-CU	tin-plated	23,0/ 1000	50
	<b>d<sub>3</sub></b>	<b>d<sub>1</sub></b>	<b>b</b>	
<b>in mm:</b>	17,0	8,5	26,0	
	<b>l</b>	<b>a</b>		
<b>in mm:</b>	39,5	17		

date: 13.11.2014