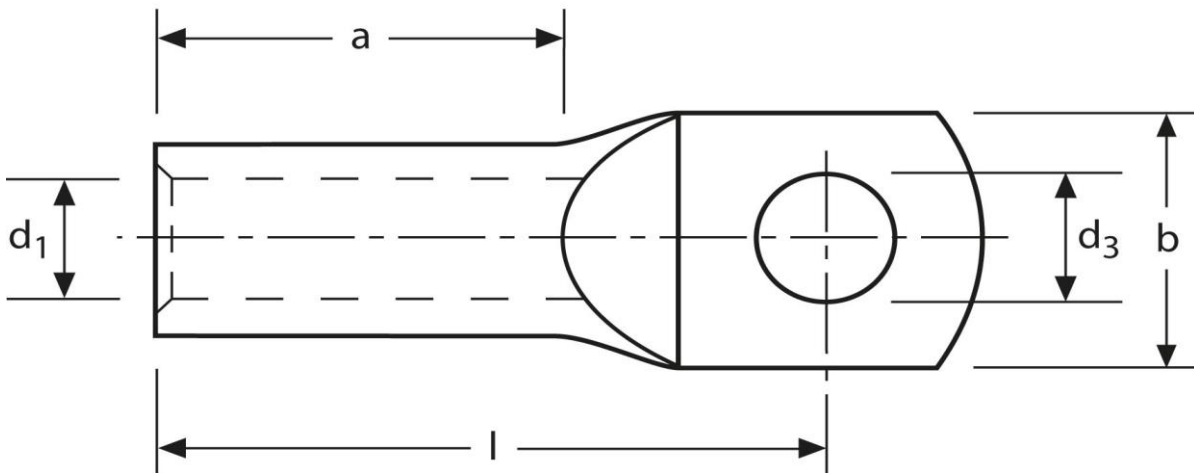


Rohrkabelschuhe

handelsüblich

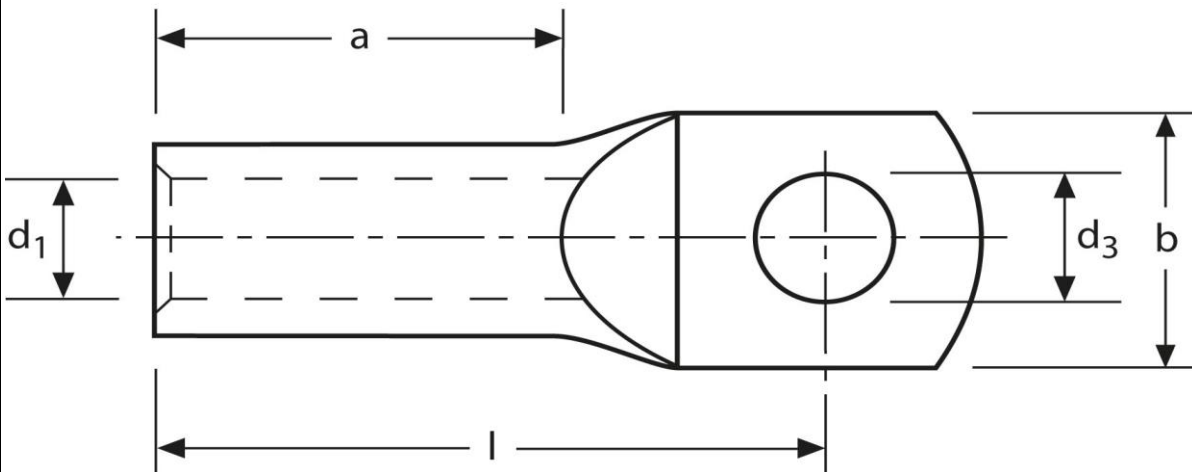
35 mm² M10



Art.Nr.	Werkstoff	Oberfläche		
K339100	E-CU	galv. Sn	21,3/ 1000	50
	d ₃	d ₁	b	
in mm:	10,5	8,5	18,0	
	l	a		
in mm:	35,5	17		

Stand: 13.11.2014

Tubular cable-lugs
 commercial
 35 mm² M10



part no.	material	surface		
K339100	E-CU	tin-plated	21,3/ 1000	50
	d₃	d₁	b	
in mm:	10,5	8,5	18,0	
	l	a		
in mm:	35,5	17		

date: 13.11.2014