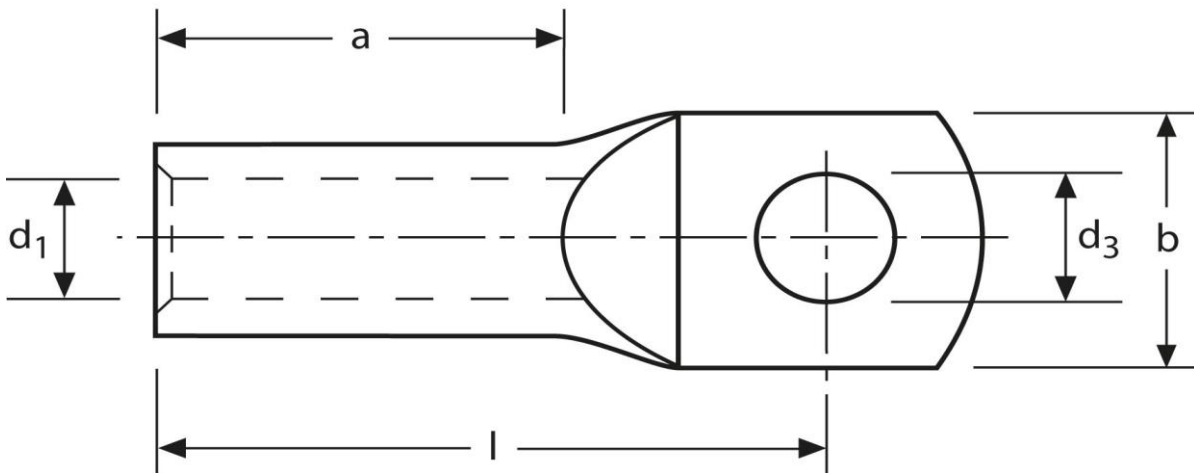


Rohrkabelschuhe

handelsüblich

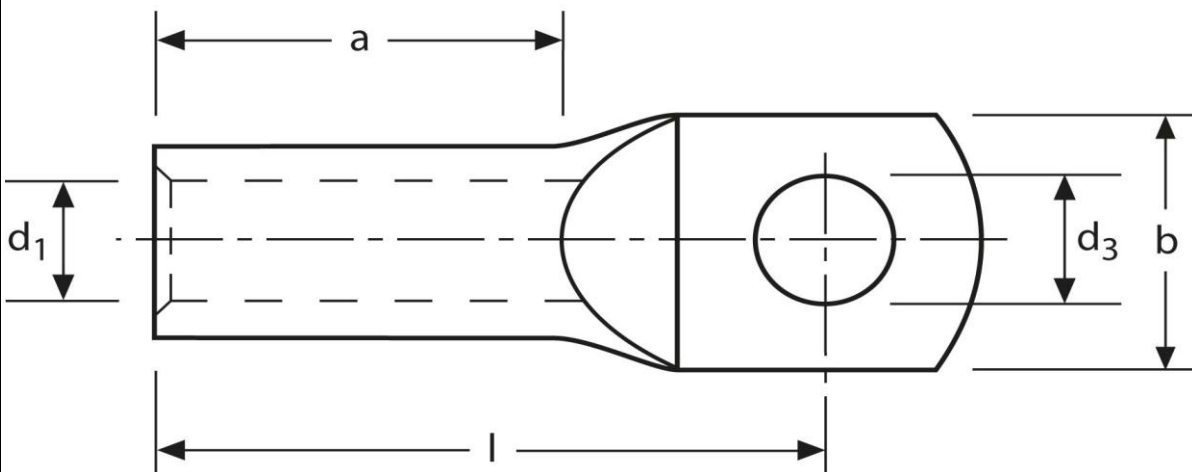
25 mm² M8



Art.Nr.	Werkstoff	Oberfläche		
K338080	E-CU	galv. Sn	13,1/ 1000	100
	d₃	d₁	b	
in mm:	8,5	7,0	16,0	
	l	a		
in mm:	30,5	15		

Stand:13.11.2014

Tubular cable-lugs
commercial
25 mm² M8



part no.	material	surface		
K338080	E-CU	tin-plated	13,1/ 1000	100
	d₃	d₁	b	
in mm:	8,5	7,0	16,0	
	l	a		
in mm:	30,5	15		

date: 13.11.2014