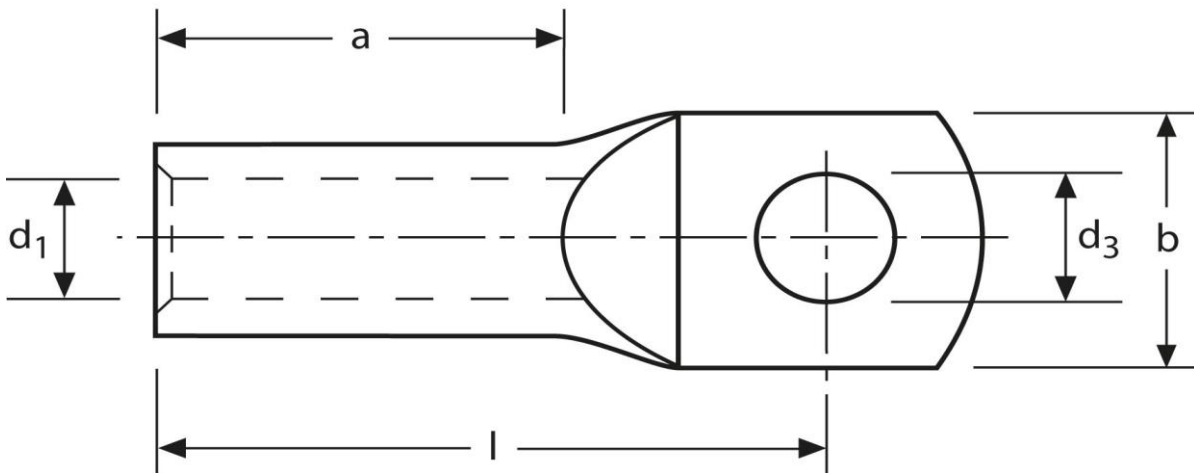


Rohrkabelschuhe

handelsüblich

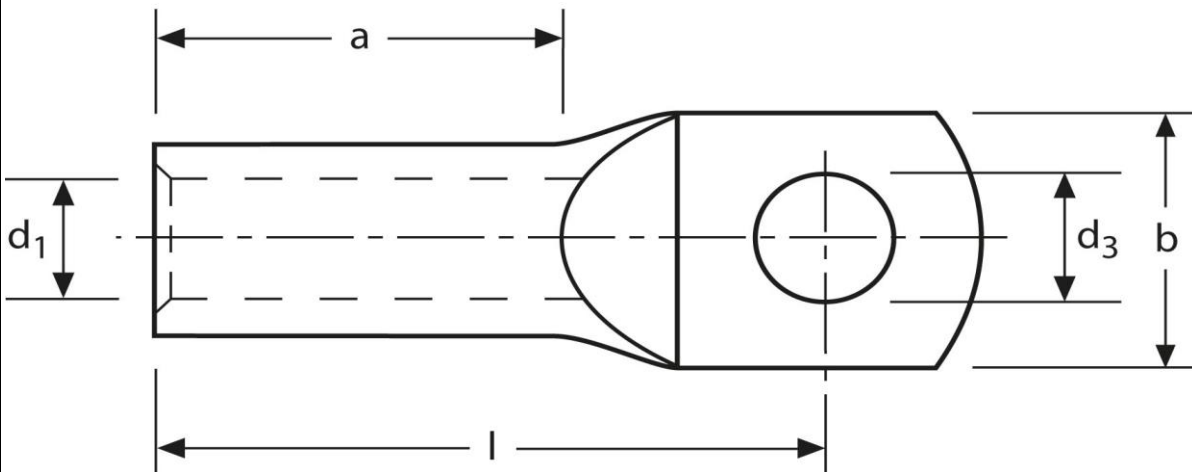
16 mm² M16



Art.Nr.	Werkstoff	Oberfläche		
K337160	E-CU	galv. Sn	14,0/ 1000	100
	d₃	d₁	b	
in mm:	17,0	5,5	21,0	
	l	a		
in mm:	39,0	13		

Stand: 03.12.2014

Tubular cable-lugs
 commercial
 16 mm² M16



part no.	material	surface		
K337160	E-CU	tin-plated	14,0/ 1000	100
	d₃	d₁	b	
in mm:	17,0	5,5	21,0	
	l	a		
in mm:	39,0	13		

date: 03.12.2014