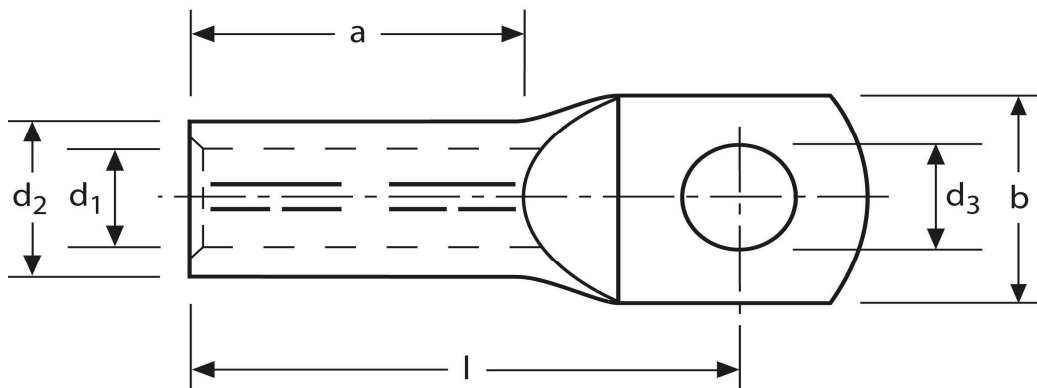


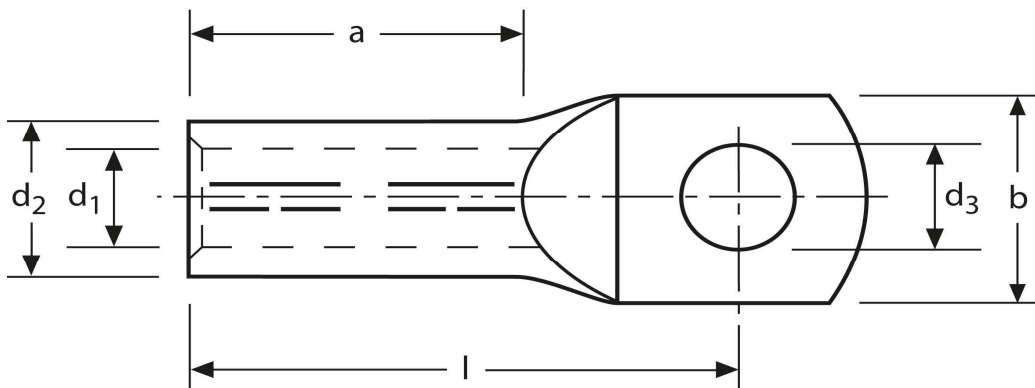
## Presskabelschuhe 1000 mm<sup>2</sup>, M16



Art.Nr.	Werkstoff	Oberfläche	Kennziffer		
K 3152160	E-CU	galv. Sn	58	1990,0/1000	1
		<b>d<sub>3</sub></b>	<b>b</b>	<b>l</b>	
<b>in mm:</b>		17,0	85,0	165	
		<b>a</b>	<b>d<sub>2</sub></b>	<b>d<sub>1</sub></b>	
<b>in mm:</b>		100	58,0	44,0	

Stand: 18.08.2014

## Compression cable-lugs 1000 mm<sup>2</sup>, M16



part no.	material	surface	code	$\frac{\Delta}{\Delta}$	
K 3152160	E-CU	tin-plated	58	1990,0/1000	1
	<b>d<sub>3</sub></b>	<b>b</b>	<b>l</b>		
<b>in mm:</b>	17,0	85,0	165		
	<b>a</b>	<b>d<sub>2</sub></b>	<b>d<sub>1</sub></b>		
<b>in mm:</b>	100	58,0	44,0		

date: 18.08.2014