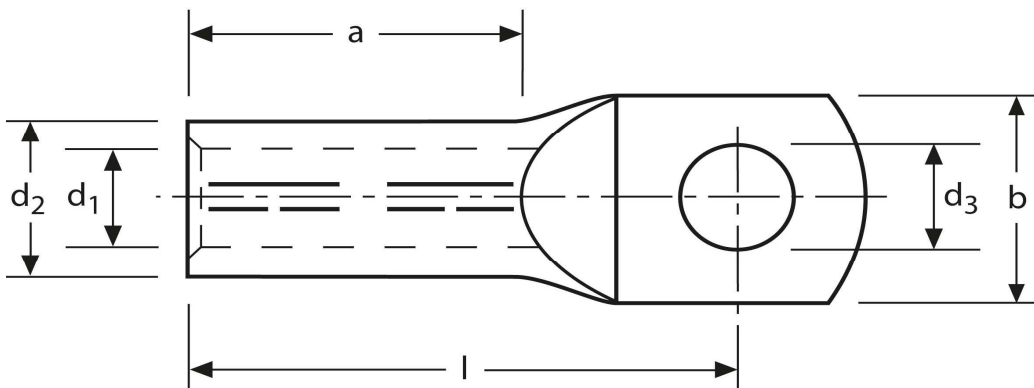


Presskabelschuhe

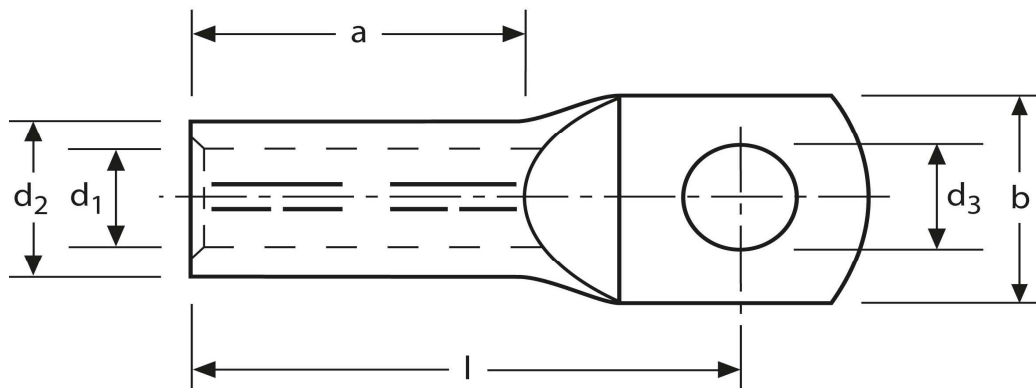
95 mm², M16



Art.Nr.	Werkstoff	Oberfläche	Kennziffer		
K 3142160	E-CU	galv. Sn	18	95,0/1000	50
		d₃	b	l	
in mm:		17,0	32,0	65	
		a	d₂	d₁	
in mm:		35	19,0	13,5	

Stand: 14.08.2014

Compression cable-lugs 95 mm², M16



part no.	material	surface	code	$\frac{\Delta}{\Delta}$	
K 3142160	E-CU	tin-plated	18	95,0/1000	50
	d₃	b	l		
in mm:	17,0	32,0	65		
	a	d₂	d₁		
in mm:	35	19,0	13,5		

date: 14.08.2014