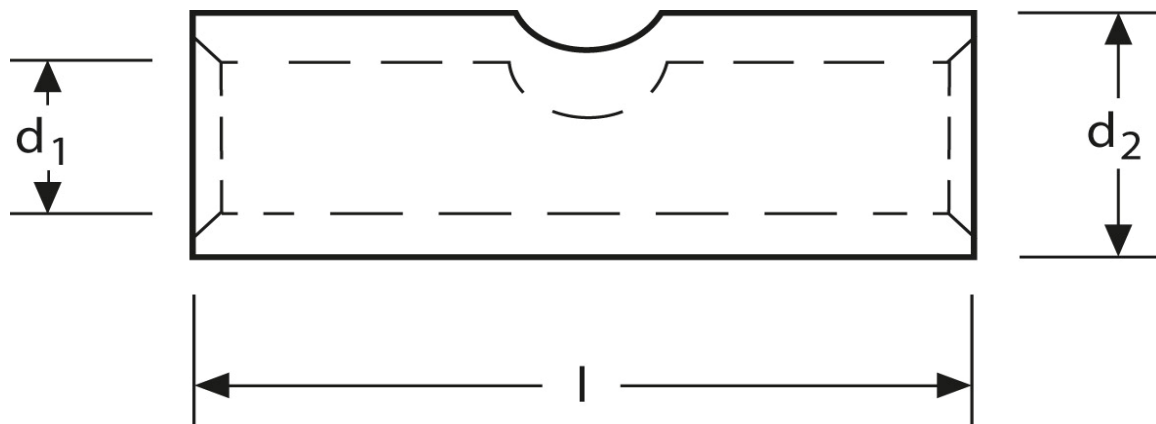


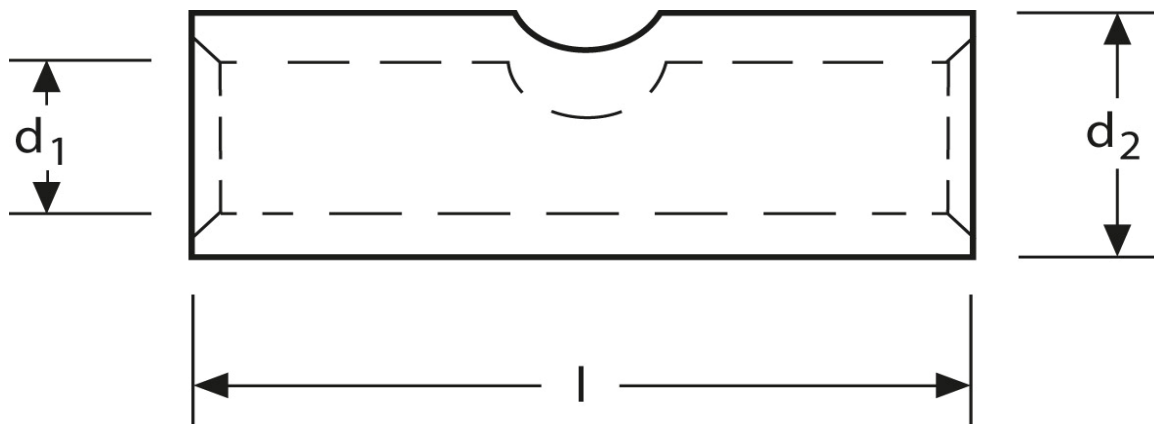
Pressverbinder 10 mm²





Art.Nr.	Werkstoff	Oberfläche		
K 3132010	E-CU	galv. Sn	3,5 / 1000	100
	d_1	l	d_2	Kennziffer
in mm:	4,5	30	6,0	6

Stand: 29.09.2014

Compression joints 10 mm²



part no.	material	surface		
K 3132010	E-CU	tin-plated	3,5 / 1000	100
	d₁	l	d₂	code
in mm:	4,5	30	6,0	6

date: 29.09.2014