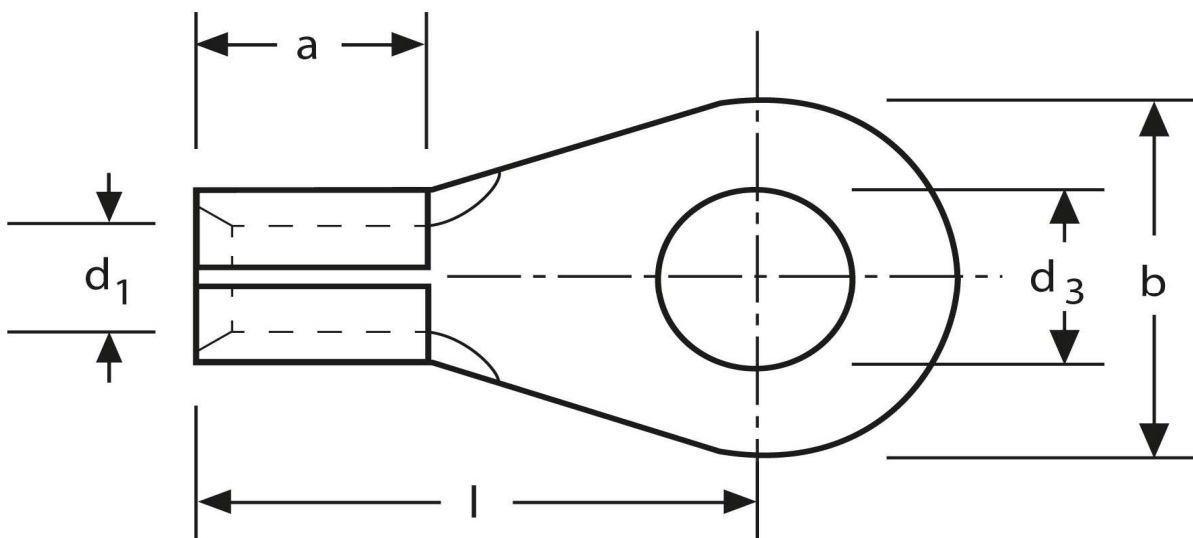


Lötkaabelschuh

Ringform

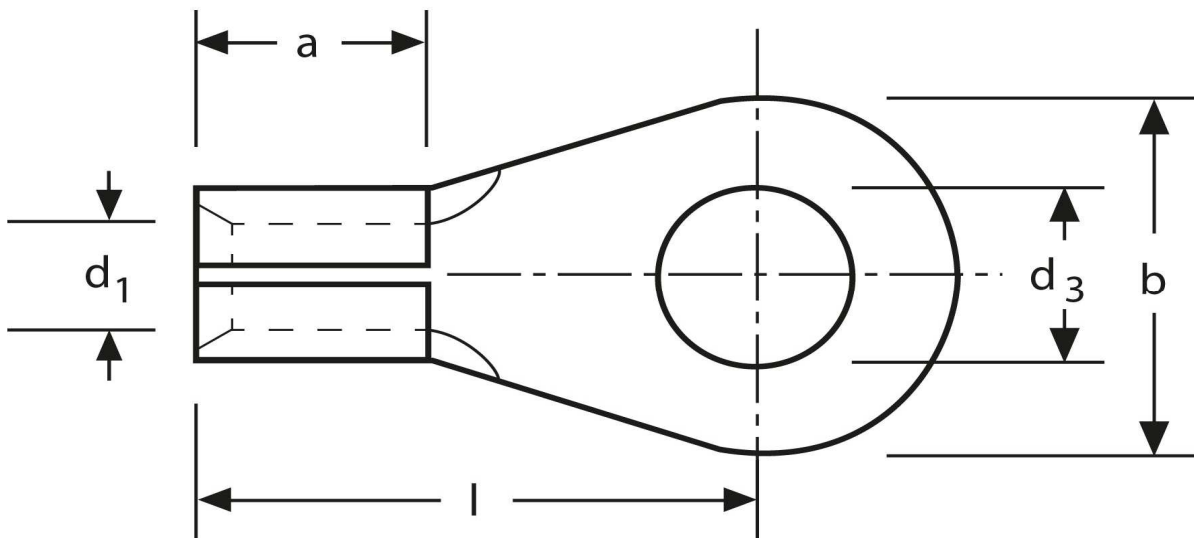
16 mm² M 12



Artikel Nr.	Werkstoff	Oberfläche		
K 3105120	Messing	galv. Sn	8,60 / 1000	250
	d₃	d₁	b	
in mm:	13,0	5,4	22	
	l	a	Nenngröße	
in mm:	31,0	11,5	12 - 5,4	

Stand: 15.07.2014

Solder tags
 ring type
 16 mm² M 12



part no.	material	surface		
K 3105120	brass	tin-plated	8,60 / 1000	250
	d₃	d₁	b	
in mm:	13,0	5,4	22	
	l	a	nominal size	
in mm:	31,0	11,5	12 - 5,4	

date: 15.07.2014