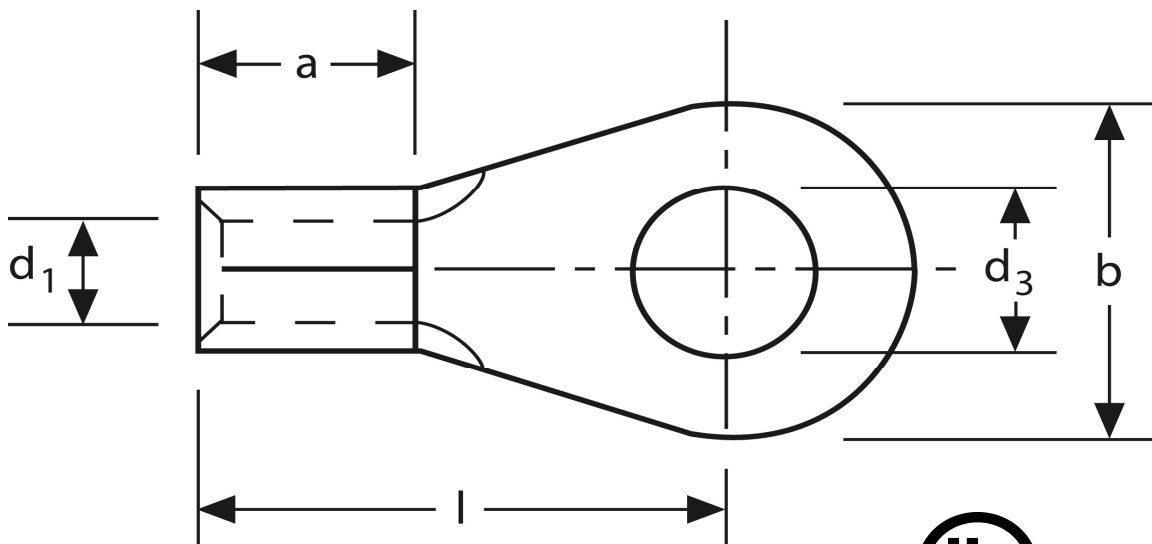


Quetschkabelschuhe

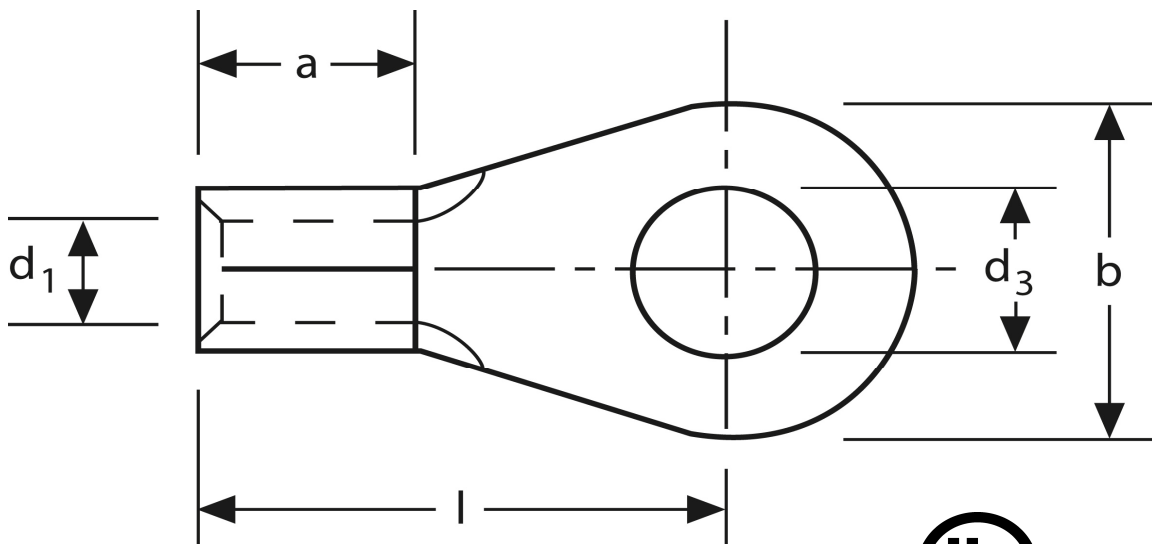
Ringform
95 mm² M 10



Art.Nr.	Werkstoff	Oberfläche		
K 310100	E-CU	galv. Sn	41,0 / 1000	50
	d₃	d₁	b	
in mm:	10,5	15,0	24	
	l	a	s	
in mm:	42	20	2,5	

Stand: 08.07.2014

Solderless terminals
ring-type
95 mm² M 10



part no.	material	surface		
K 310100	E-CU	tin-plated	41,0 / 1000	50
	d₃	d₁	b	
in mm:	10,5	15,0	24	
	l	a	s	
in mm:	42	20	2,5	

date: 08.07.2014