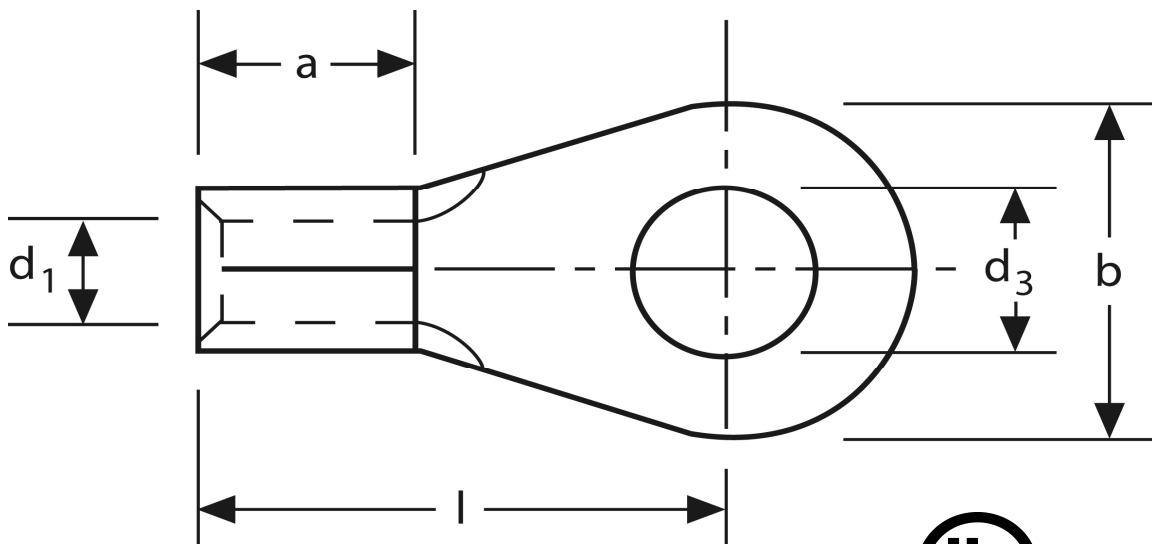


## Quetschkabelschuhe

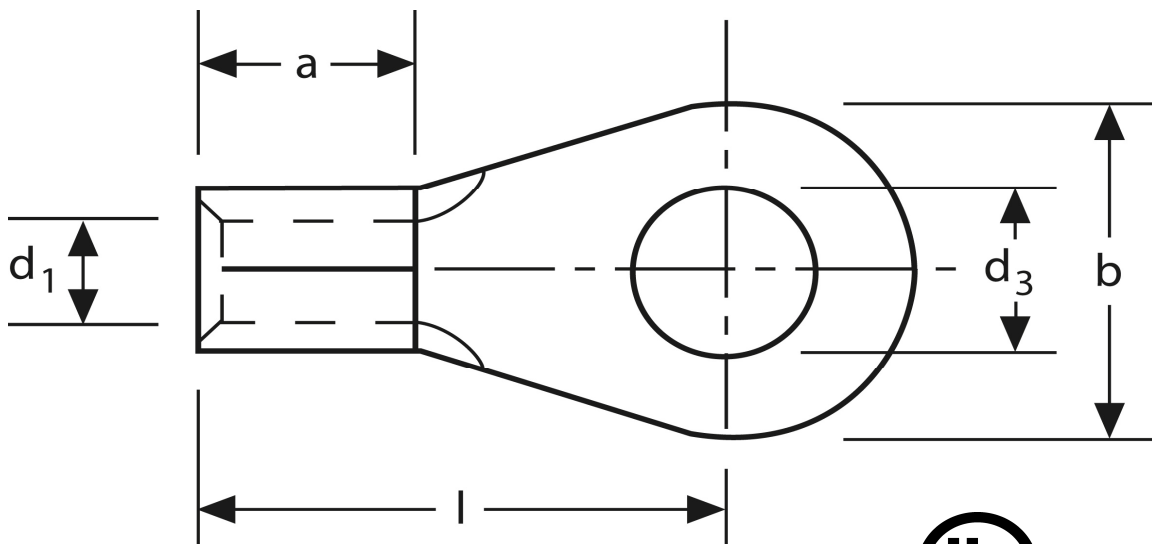
Ringform  
 10 mm<sup>2</sup> M 10



Art.Nr.	Werkstoff	Oberfläche		
K 304100	E-CU	galv. Sn	3,40 / 1000	500
	<b>d<sub>3</sub></b>	<b>d<sub>1</sub></b>	<b>b</b>	
<b>in mm:</b>	10,5	4,5	18	
	<b>l</b>	<b>a</b>	<b>s</b>	
<b>in mm:</b>	21	8	1,1	

Stand: 08.07.2014

**Solderless terminals**  
ring-type  
10 mm<sup>2</sup> M 10



part no.	material	surface		
K 304100	E-CU	tin-plated	3,40 / 1000	500
	<b>d<sub>3</sub></b>	<b>d<sub>1</sub></b>	<b>b</b>	
<b>in mm:</b>	10,5	4,5	18	
	<b>l</b>	<b>a</b>	<b>s</b>	
<b>in mm:</b>	21	8	1,1	

date: 08.07.2014