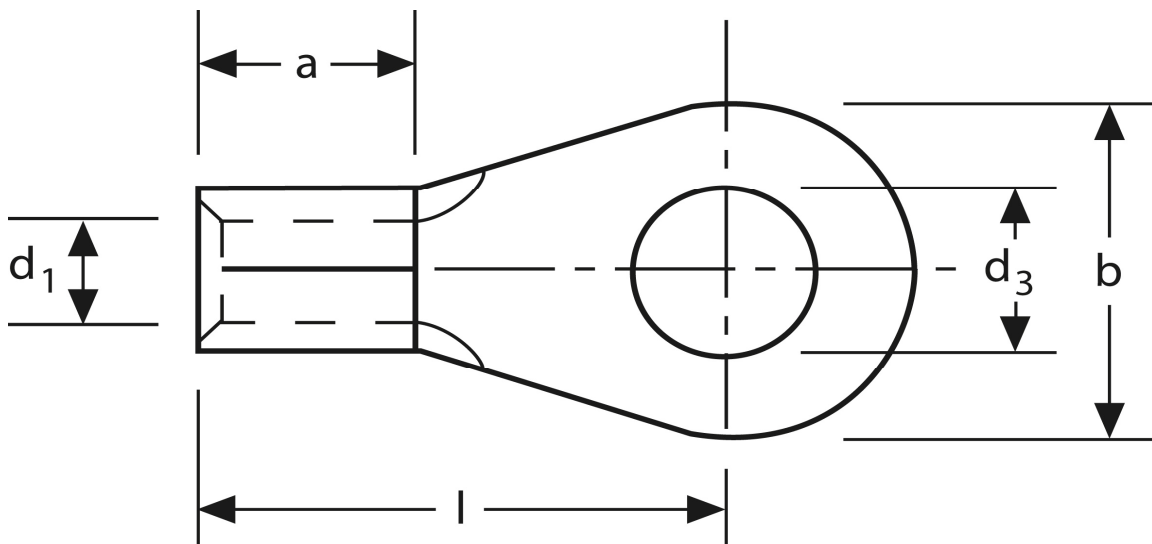


Quetschkabelschuhe

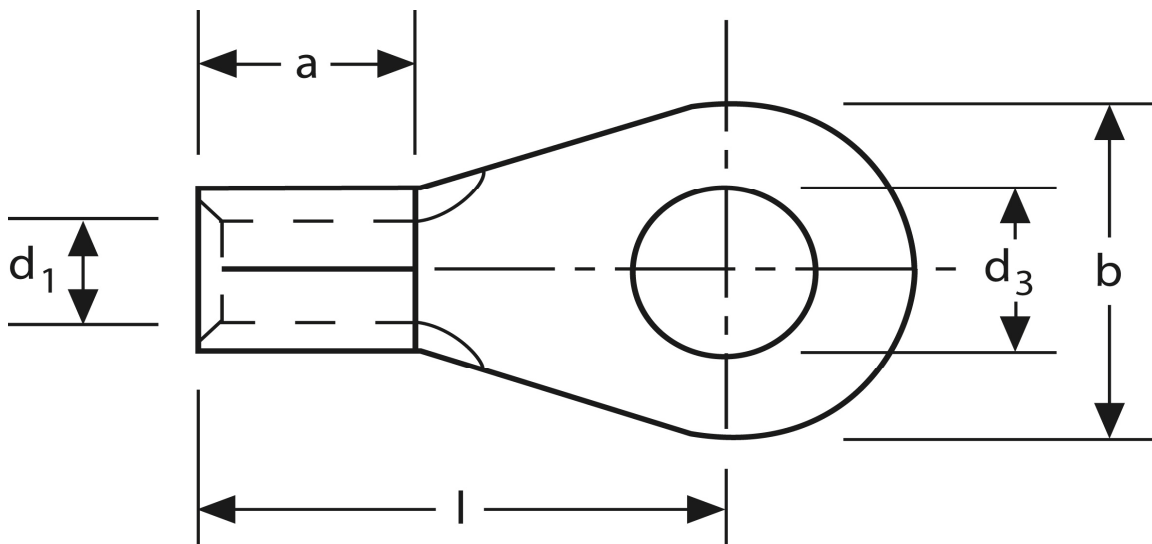
Ringform
0,5 mm² M 5



Art.Nr.	Werkstoff	Oberfläche		
K 300050	E-CU	galv. Sn	0,27 / 1000	2.000
	d₃	d₁	b	
in mm:	5,3	1,0	8	
	l	a	s	
in mm:	12	4	0,5	

Stand: 08.07.2014

Solderless terminals
 ring-type
 0,5 mm² M 5



part no.	material	surface		
K 300050	E-CU	tin-plated	0,27 / 1000	2.000
	d₃	d₁	b	
in mm:	5,3	1,0	8	
	l	a	s	
in mm:	12	4	0,5	

date: 08.07.2014