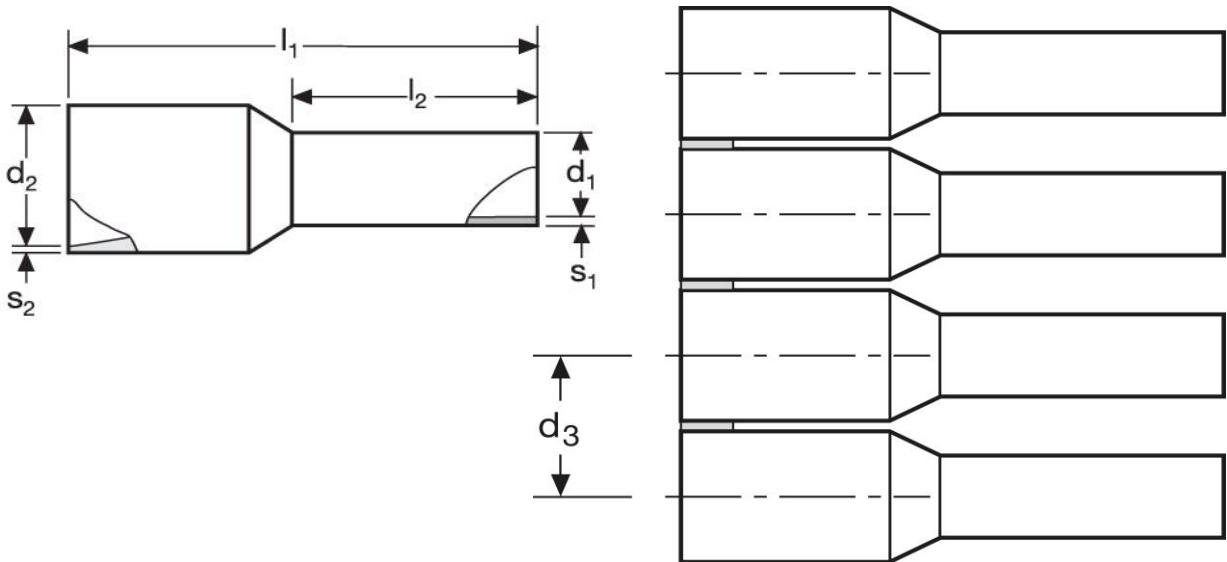






## Aderendhülsen - Bandware

0,5 mm<sup>2</sup> N - Kleinspule



Material	Isolation	
E-Cu, gal. Sn	PP	3.000

$l_1$	$l_2$	$d_1$	$s_1$	$s_2$
14,5	8	1,1	0,15	0,30

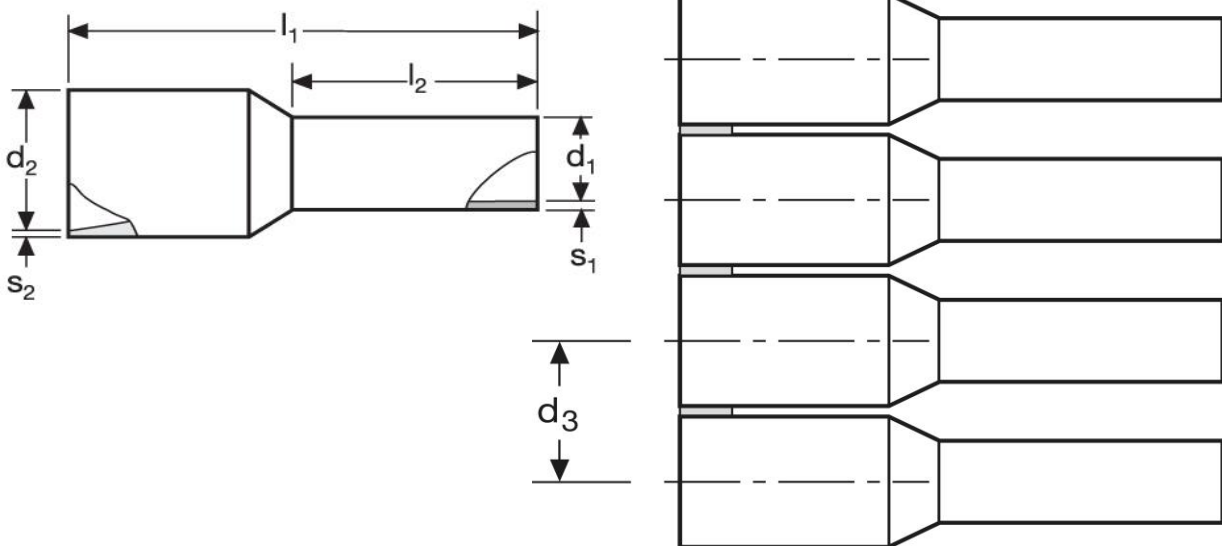
$d_2$	$d_3$	WE	TM	DIN
2,6	3,6	A 280012	A 280022	A 280032
		orange	weiß	weiß
				

\*Maße in mm

Stand: 07.01.2019




## Cord end- sleeves - on reel

0,5 mm<sup>2</sup> N - small spool



material	insulation	
E-Cu, gal. Sn	PP	3.000

$l_1$	$l_2$	$d_1$	$s_1$	$s_2$
14,5	8	1,1	0,15	0,30

$d_2$	$d_3$	WE	TM	DIN
2,6	3,6	A 280012	A 280022	A 280032
		orange	white	white
				

\*Dimensions in mm

date: 07.01.2019