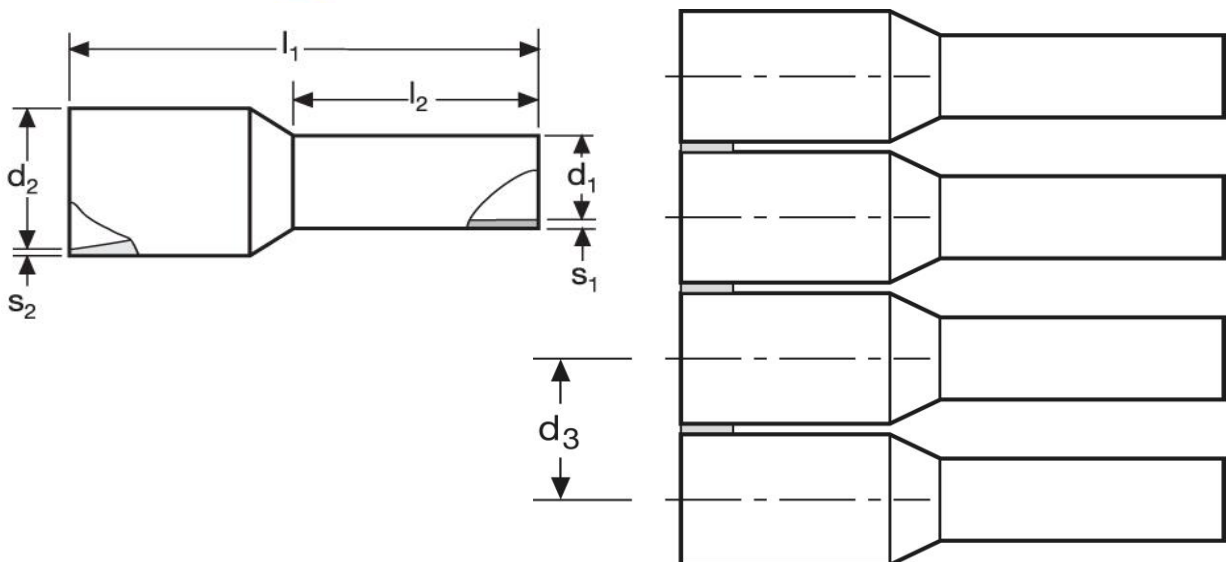






## Aderendhülsen - Bandware

0,5 mm<sup>2</sup> N - Mittelspule



Material	Isolation	
E-Cu, gal. Sn	PP	5.000

$l_1$	$l_2$	$d_1$	$s_1$	$s_2$
14	8	1,0	0,15	0,25

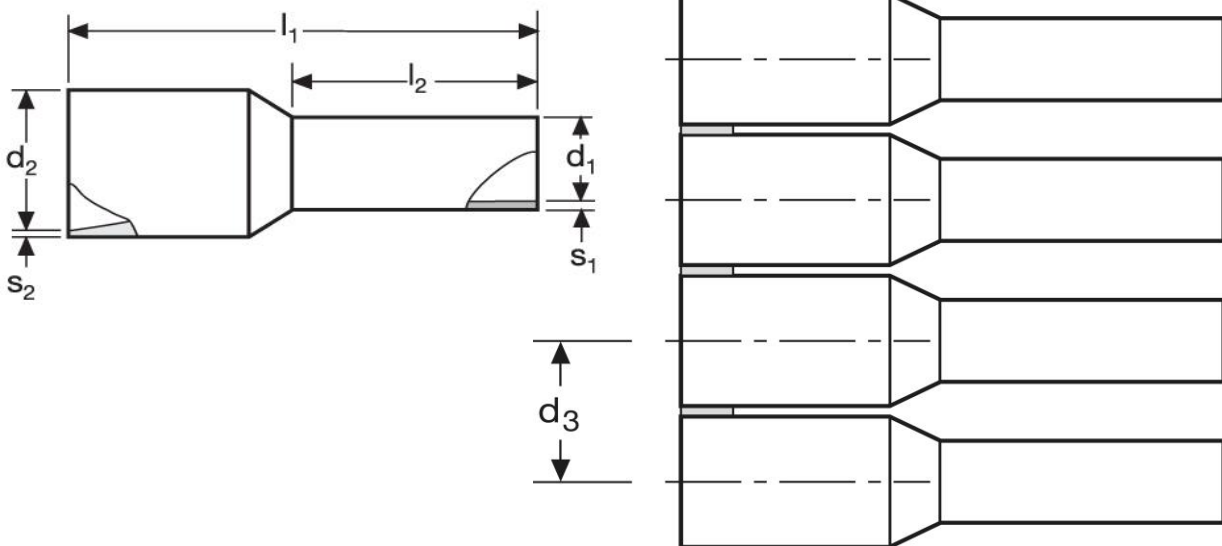
$d_2$	$d_3$	WE	TM	DIN
2,6	3,6	A 280015	A 280025	A 280035
		orange	weiß	weiß
				


\*Maße in mm

Stand: 04.04.2016




## Cord end- sleeves - on reel

0,5 mm<sup>2</sup> N - medium spool



material	insulation	
E-Cu, gal. Sn	PP	5.000

$l_1$	$l_2$	$d_1$	$s_1$	$s_2$
14	8	1,0	0,15	0,25

$d_2$	$d_3$	WE	TM	DIN
2,6	3,6	A 280015	A 280025	A 280035
		orange	white	white
				

\*Dimensions in mm

date: 04.04.2016