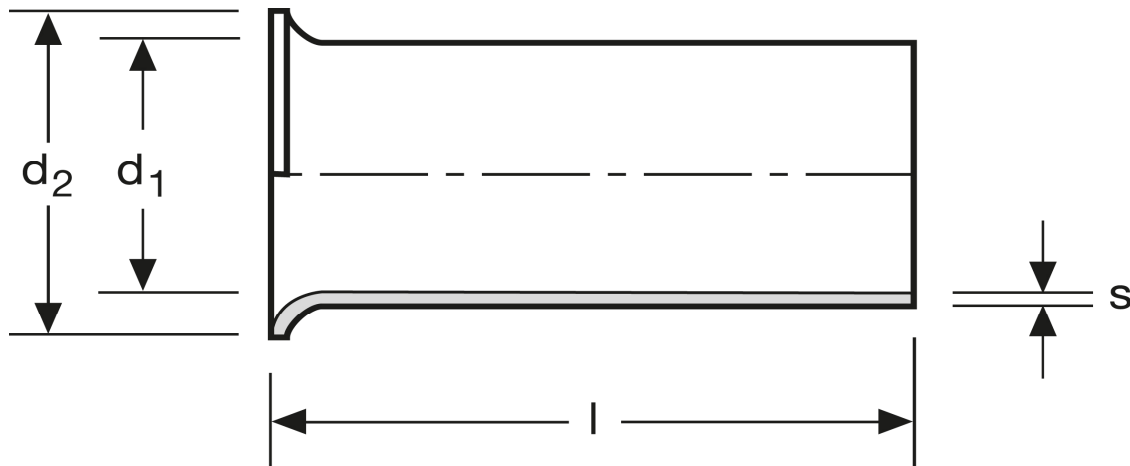


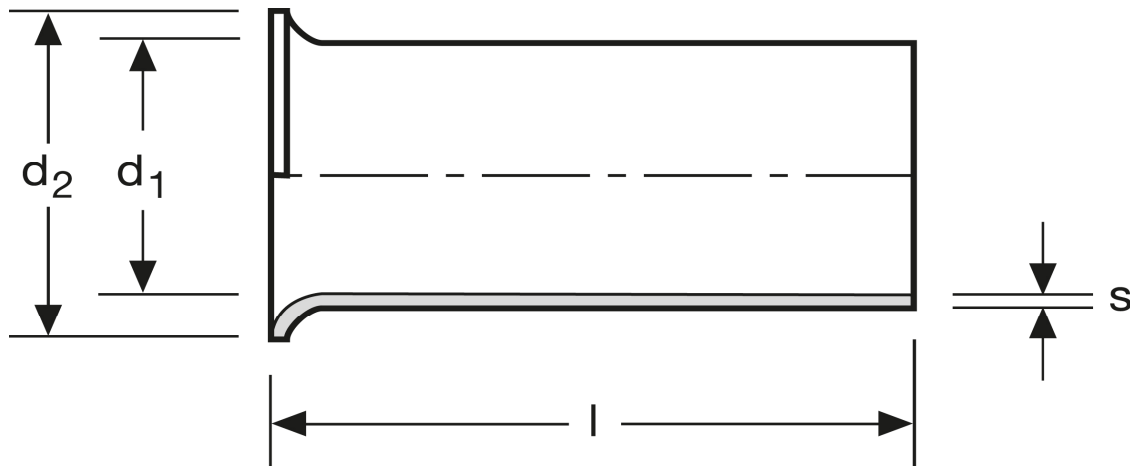
Aderendhülsen 185 mm² - 40 mm



Art.Nr.	Werkstoff	Oberfläche		
A 121400	Cu-ETP	galv. Sn	14,170/1000	25
	l	d ₁	d ₂	s
in mm:	40	20,2	23,5	0,55

Stand: 03.07.2014

Cord end-sleeves
 185 mm² - 40 mm



art.no.	material	surface		
A 121400	Cu-ETP	tin plated	14,170/1000	25
	l	d_1	d_2	s
in mm:	40	20,2	23,5	0,55

Date: 03.07.2014