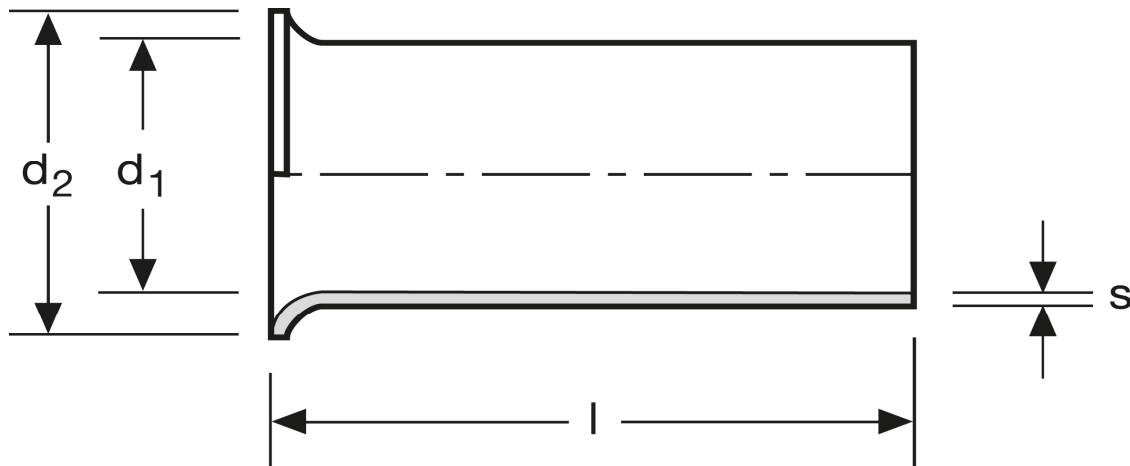


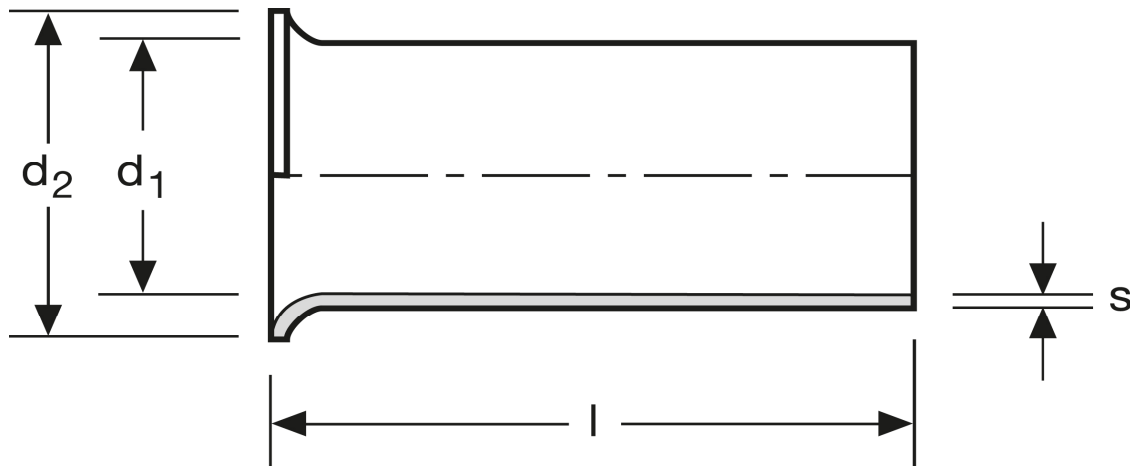
Aderendhülsen 150 mm² - 34 mm



Art.Nr.	Werkstoff	Oberfläche		
A 120340	Cu-ETP	galv. Sn	9,280/1000	25
	l	d_1	d_2	s
in mm:	34	18,7	21,0	0,45

Stand: 03.07.2014

Cord end-sleeves 150 mm² - 34 mm



art.no.	material	surface		
A 120340	Cu-ETP	tin plated	9,280/1000	25
	l	d_1	d_2	s
in mm:	34	18,7	21,0	0,45

Date: 03.07.2014