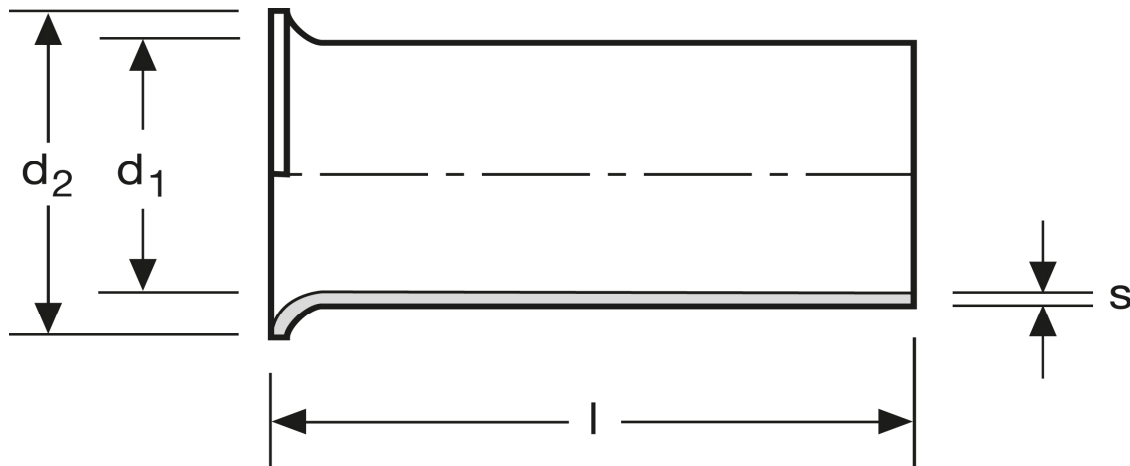


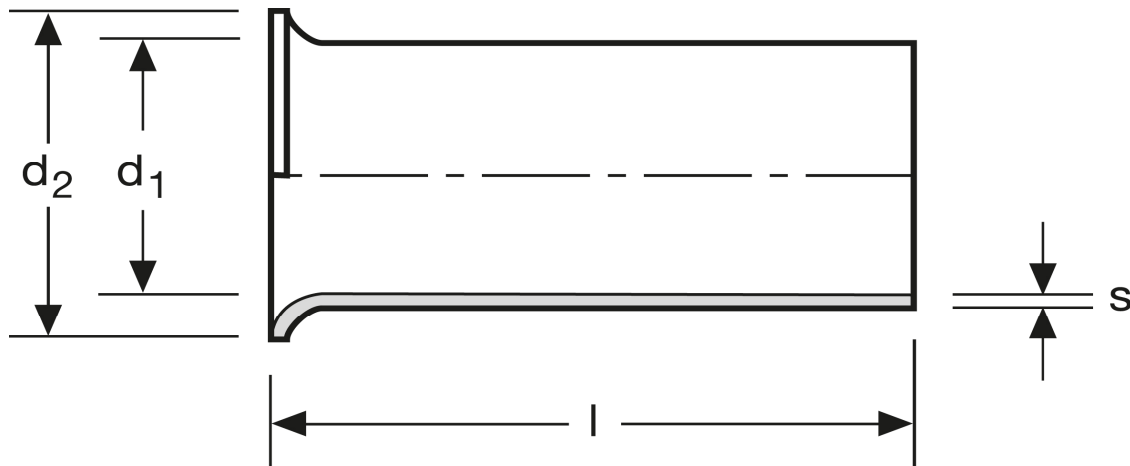
Aderendhülsen 120 mm² - 32 mm



Art.Nr.	Werkstoff	Oberfläche		
A 119320	Cu-ETP	galv. Sn	7,830/1000	25
	l	d ₁	d ₂	s
in mm:	32	16,7	19,0	0,45

Stand: 03.07.2014

Cord end-sleeves 120 mm² - 32 mm



art.no.	material	surface		
A 119320	Cu-ETP	tin plated	7,830/1000	25
	l	d_1	d_2	s
in mm:	32	16,7	19,0	0,45

Date: 03.07.2014