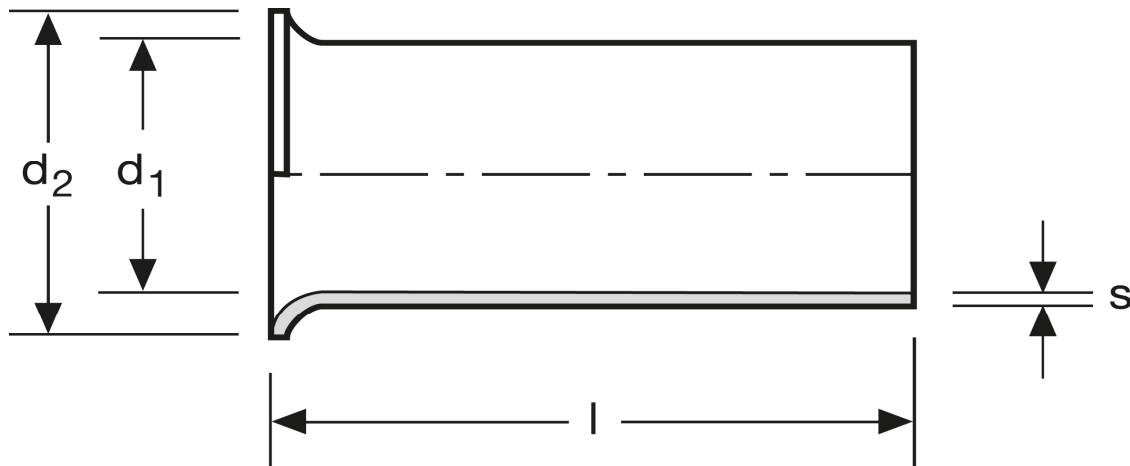


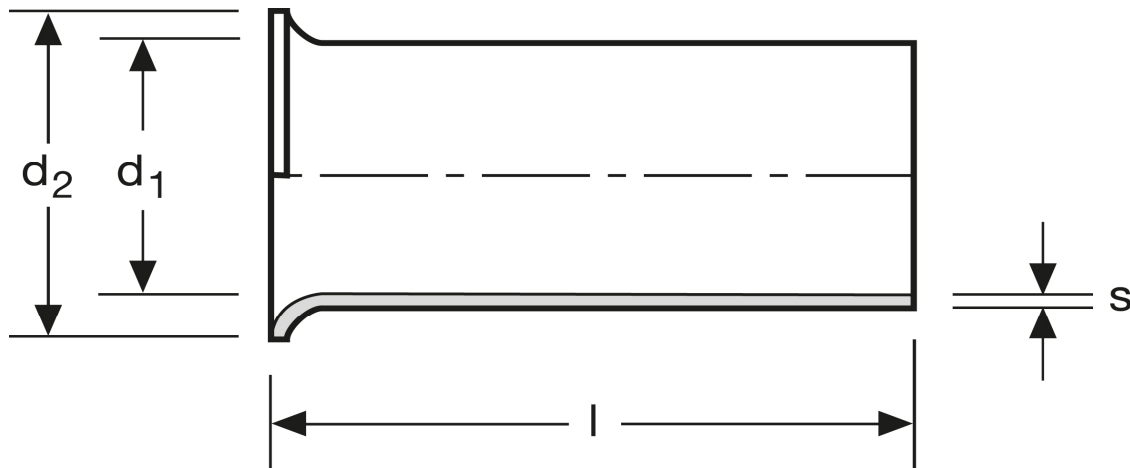
Aderendhülsen 70 mm² - 32 mm



Art.Nr.	Werkstoff	Oberfläche		
A 117320	Cu-ETP	galv. Sn	4,780/1000	50
	l	d_1	d_2	s
in mm:	32	12,7	15,0	0,35

Stand: 03.07.2014

Cord end-sleeves 70 mm² - 32 mm



art.no.	material	surface		
A 117320	Cu-ETP	tin plated	4,780/1000	50
	l	d₁	d₂	s
in mm:	32	12,7	15,0	0,35

Date: 03.07.2014