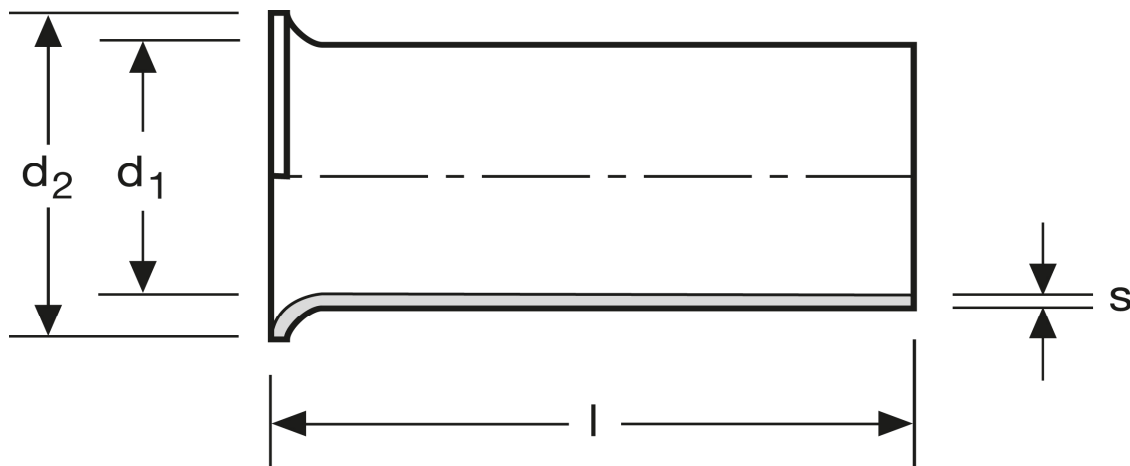


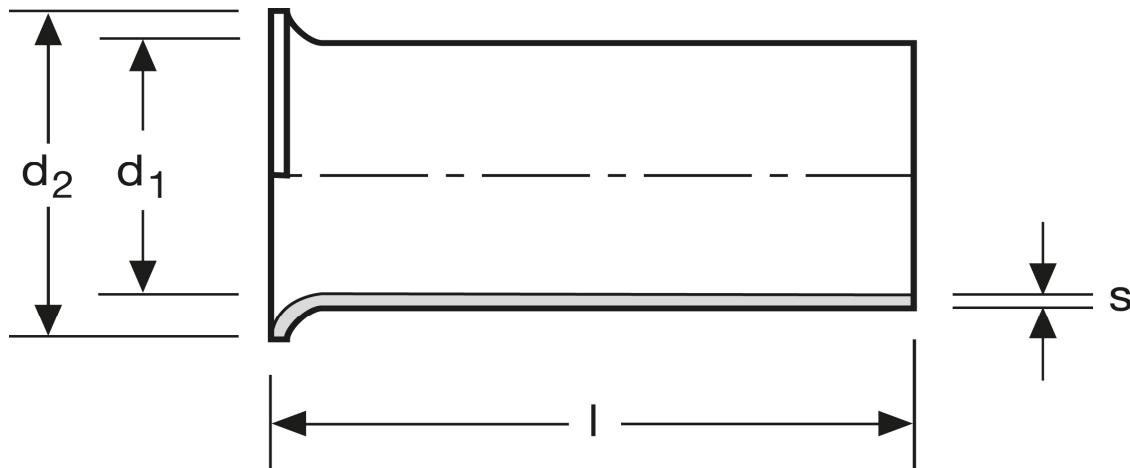
Aderendhülsen 50 mm² - 32 mm



Art.Nr.	Werkstoff	Oberfläche		
A 116320	Cu-ETP	galv. Sn	3,106/1000	100
	l	d ₁	d ₂	s
in mm:	32	10,5	13,0	0,30

Stand: 03.07.2014

Cord end-sleeves 50 mm² - 32 mm



art.no.	material	surface		
A 116320	Cu-ETP	tin plated	3,106/1000	100
	l	d_1	d_2	s
in mm:	32	10,5	13,0	0,30

Date: 03.07.2014