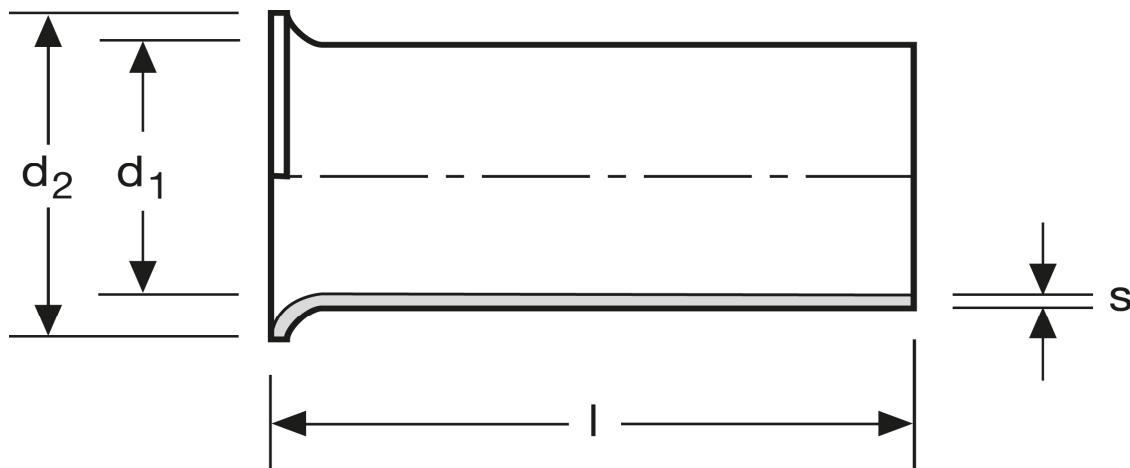


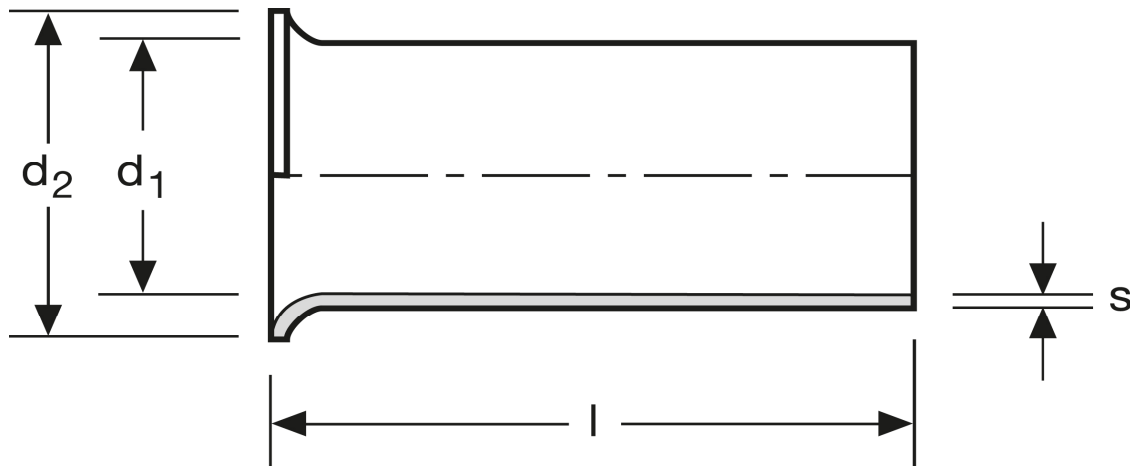
Aderendhülsen 35 mm² - 20 mm



Art.Nr.	Werkstoff	Oberfläche		
A 115200	Cu-ETP	galv. Sn	1,219/1000	100
	l	d ₁	d ₂	s
in mm:	20	8,4	11,0	0,23

Stand: 03.07.2014

Cord end-sleeves 35 mm² - 20 mm



art.no.	material	surface		
A 115200	Cu-ETP	tin plated	1,219/1000	100
	l	d_1	d_2	s
in mm:	20	8,4	11,0	0,23

Date: 03.07.2014