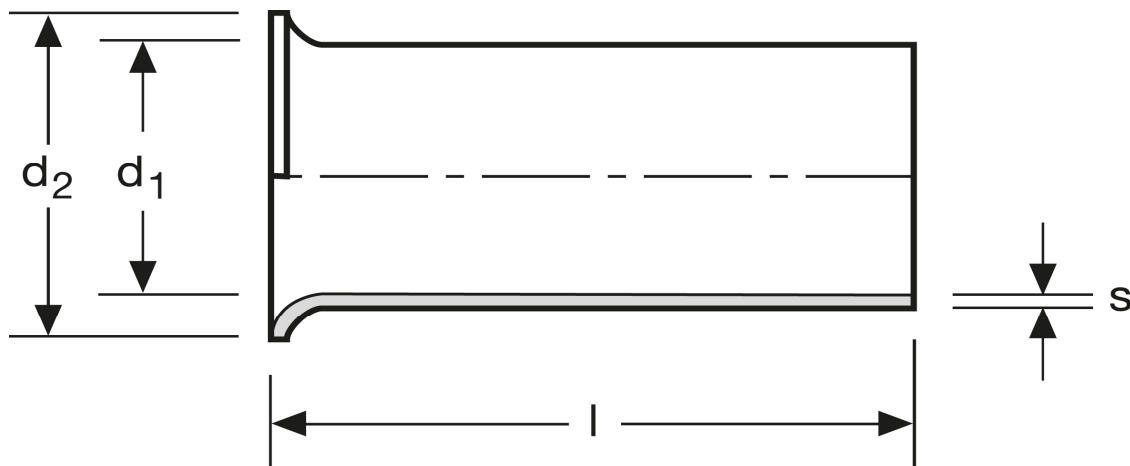


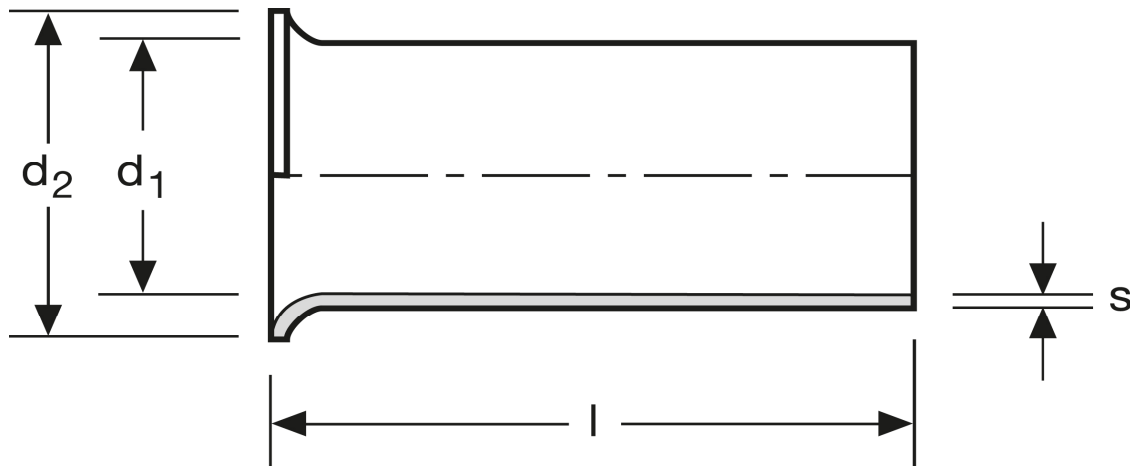
Aderendhülsen 25 mm² - 25 mm



Art.Nr.	Werkstoff	Oberfläche		
A 114251	Cu-ETP	galv. Ag	1,305/1000	100
	l	d_1	d_2	s
in mm:	25	7,4	9,5	0,22

Stand: 03.07.2014

Cord end-sleeves 25 mm² - 25 mm



art.no.	material	surface		
A 114251	Cu-ETP	silv. plated	1,305/1000	100
	l	d_1	d_2	s
in mm:	25	7,4	9,5	0,22

Date: 03.07.2014