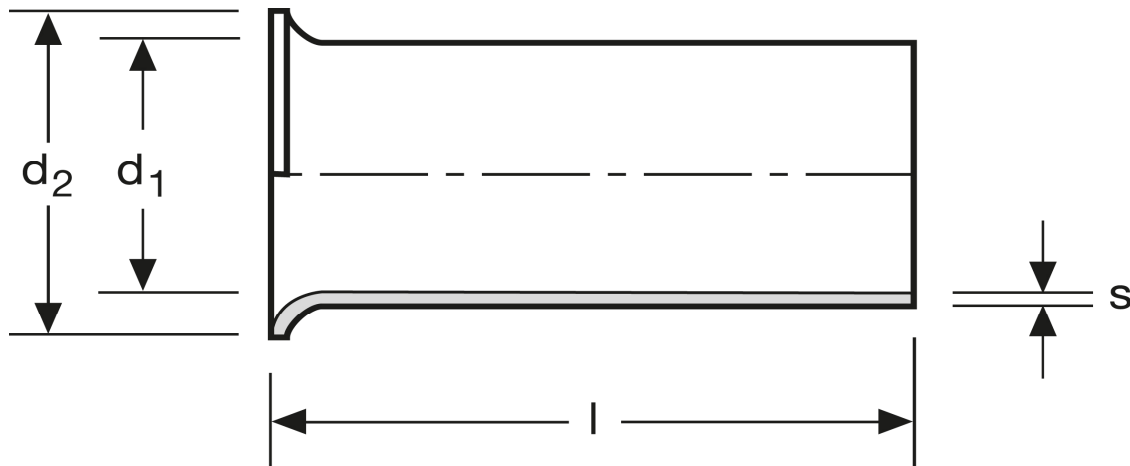


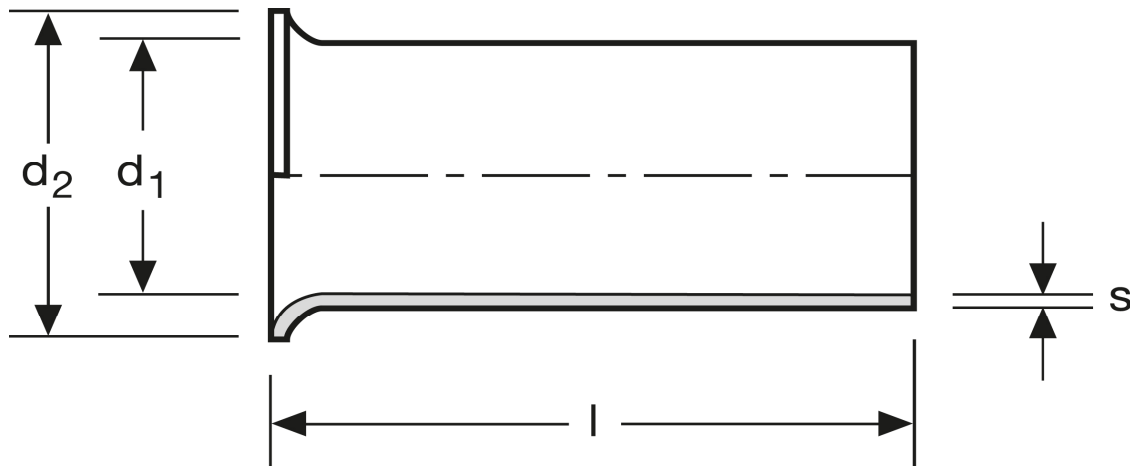
## Aderendhülsen 25 mm<sup>2</sup> - 15 mm



Art.Nr.	Werkstoff	Oberfläche		
A 114151	Cu-ETP	galv. Ag	0,790/1000	100
	l	d <sub>1</sub>	d <sub>2</sub>	s
in mm:	15	7,4	9,5	0,22

Stand: 03.07.2014

## Cord end-sleeves 25 mm<sup>2</sup> - 15 mm



art.no.	material	surface		
A 114151	Cu-ETP	silv. plated	0,790/1000	100
	l	d <sub>1</sub>	d <sub>2</sub>	s
in mm:	15	7,4	9,5	0,22

Date: 03.07.2014