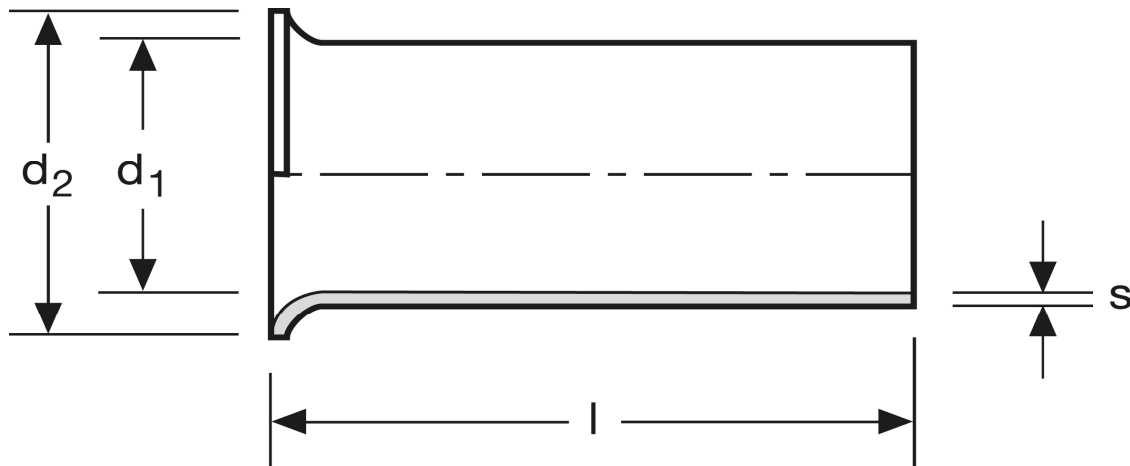


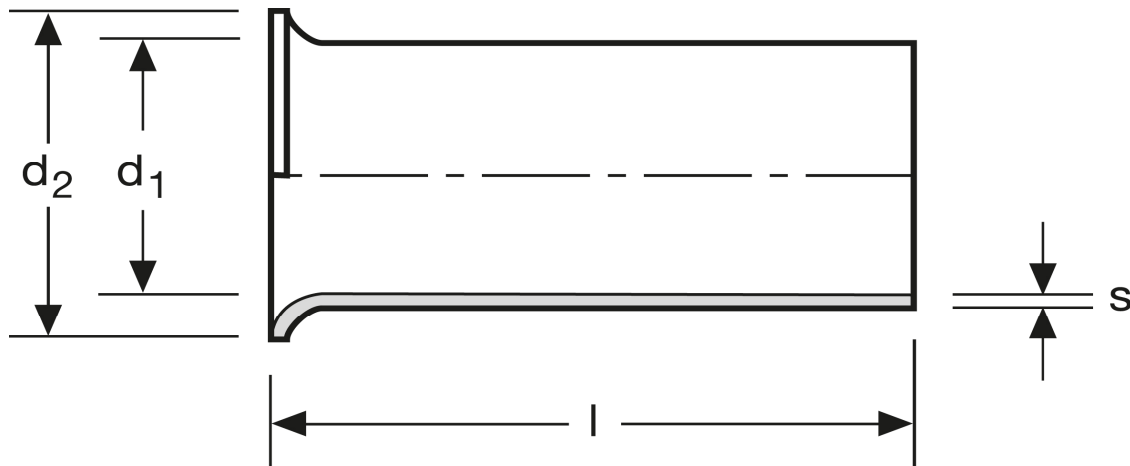
Aderendhülsen 10 mm² - 20 mm



Art.Nr.	Werkstoff	Oberfläche		
A 112200	Cu-ETP	galv. Sn	0,568/1000	100
	l	d_1	d_2	s
in mm:	20	4,6	5,8	0,20

Stand: 02.07.2014

Cord end-sleeves 10 mm² - 20 mm



art.no.	material	surface		
A 112200	Cu-ETP	tin plated	0,568/1000	100
	l	d₁	d₂	s
in mm:	20	4,6	5,8	0,20

Date: 02.07.2014