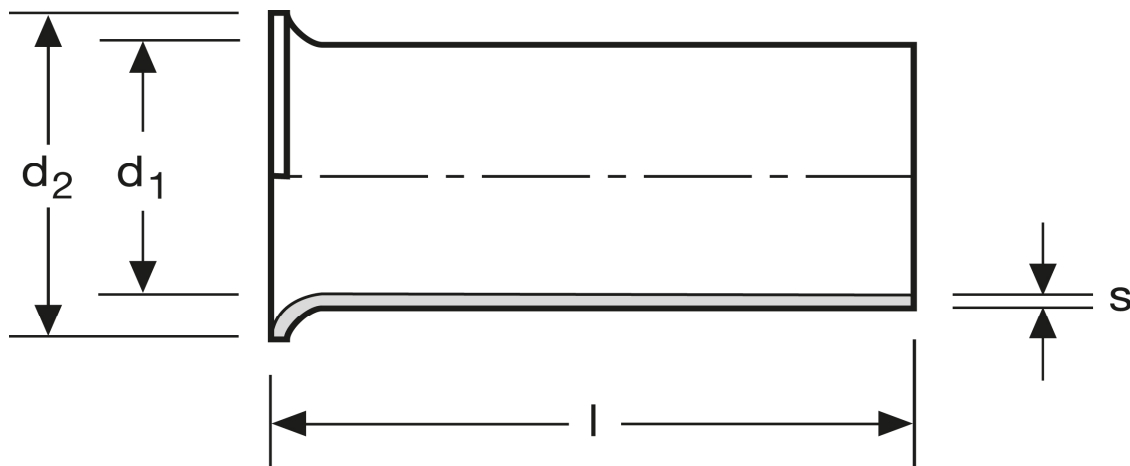


## Aderendhülsen 6 mm<sup>2</sup> - 15 mm

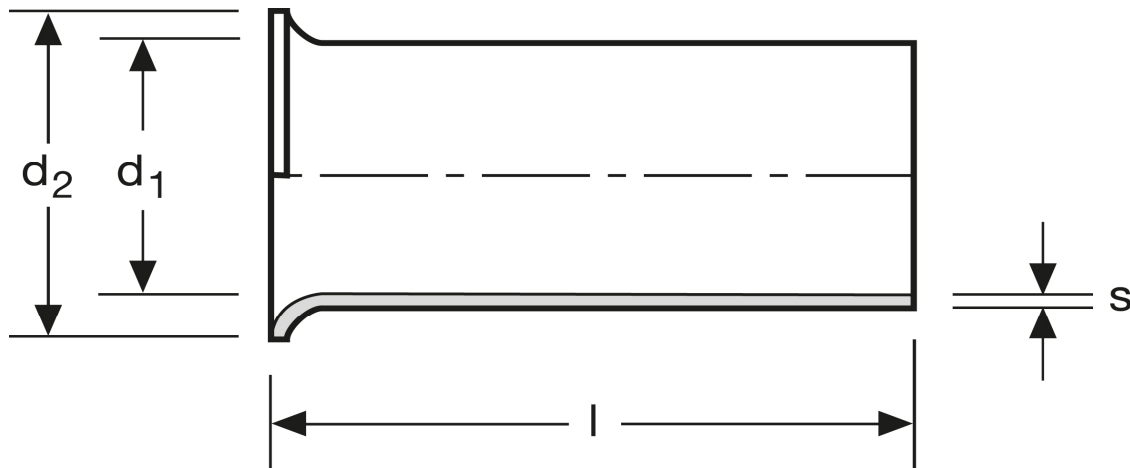


Art.Nr.	Werkstoff	Oberfläche		
A 111150	Cu-ETP	galv. Sn	0,347/1000	500
	l	d <sub>1</sub>	d <sub>2</sub>	s
in mm:	15	3,6	4,7	0,20

Stand: 01.07.2014

## Cord end-sleeves

6 mm<sup>2</sup> - 15 mm



art.no.	material	surface		
A 111150	Cu-ETP	tin plated	0,347/1000	500
	$l$	$d_1$	$d_2$	$s$
in mm:	15	3,6	4,7	0,20

Date: 01.07.2014