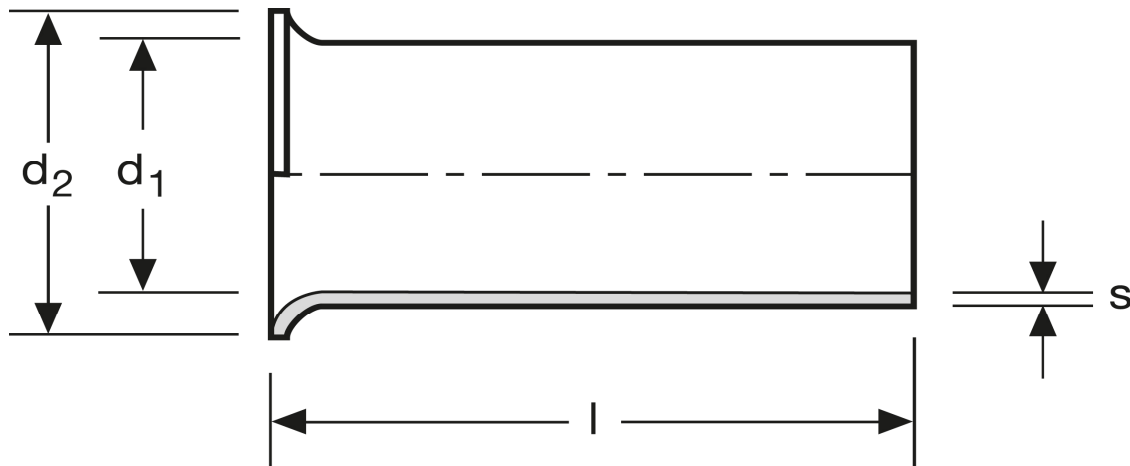


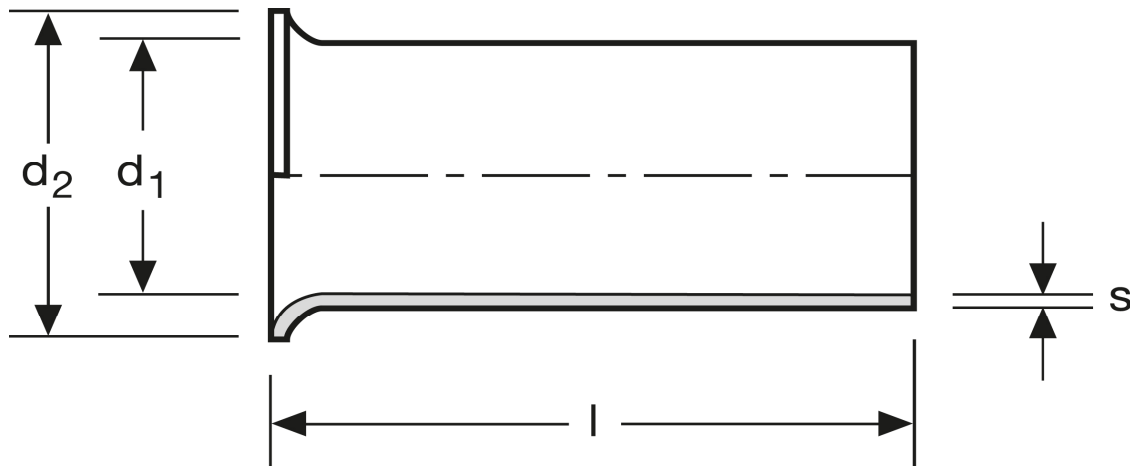
## Aderendhülsen 2,5 mm<sup>2</sup> - 15 mm



Art.Nr.	Werkstoff	Oberfläche		
A 109150	Cu-ETP	galv. Sn	0,165/1000	1.000
	l	d <sub>1</sub>	d <sub>2</sub>	s
in mm:	15	2,3	3,4	0,15

Stand: 01.07.2014

## Cord end-sleeves 2,5 mm<sup>2</sup> - 15 mm



art.no.	material	surface		
A 109150	Cu-ETP	tin plated	0,165/1000	1.000
	$l$	$d_1$	$d_2$	$s$
in mm:	15	2,3	3,4	0,15

Date: 01.07.2014