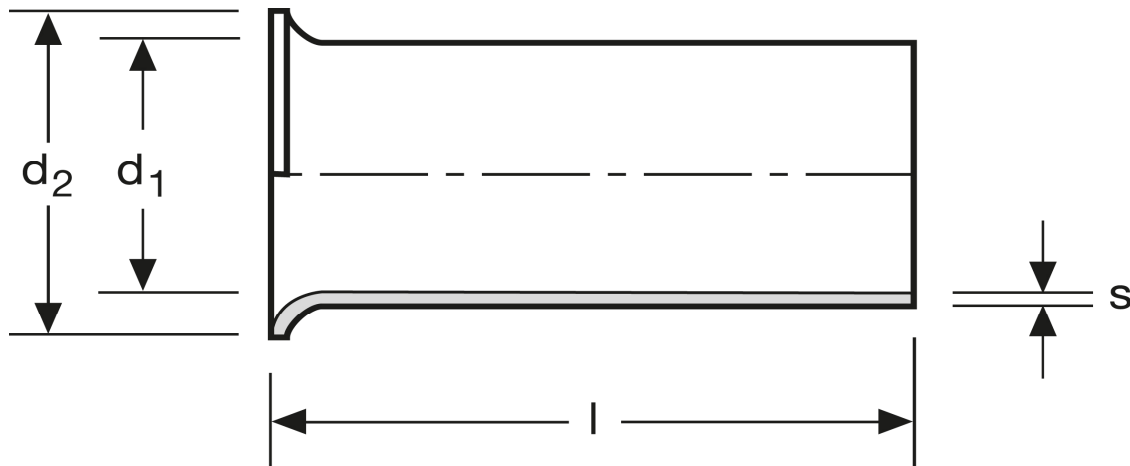


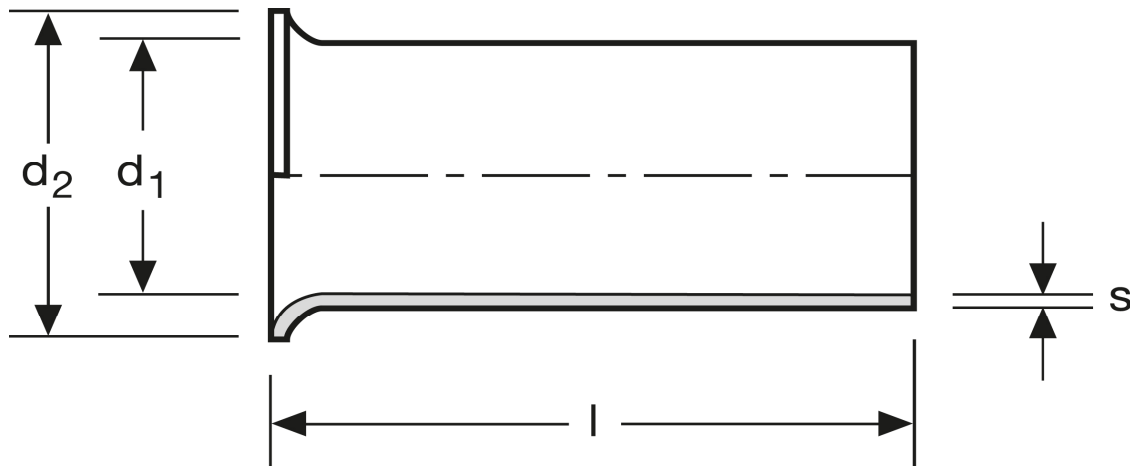
Aderendhülsen 1,5 mm² - 8 mm



Art.Nr.	Werkstoff	Oberfläche		
A 108081	Cu-ETP	galv. Ag	0,077/1000	1.000
	l	d ₁	d ₂	s
in mm:	8	1,8	2,8	0,15

Stand: 01.07.2014

Cord end-sleeves 1,5 mm² - 8 mm



art.no.	material	surface		
A 108081	Cu-ETP	silv. plated	0,077/1000	1.000
	l	d₁	d₂	s
in mm:	8	1,8	2,8	0,15

Date: 01.07.2014