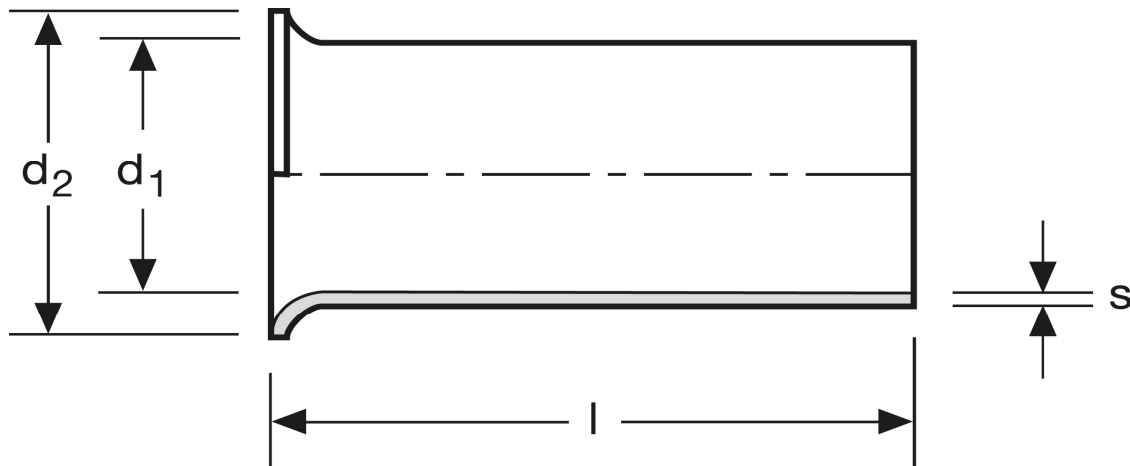


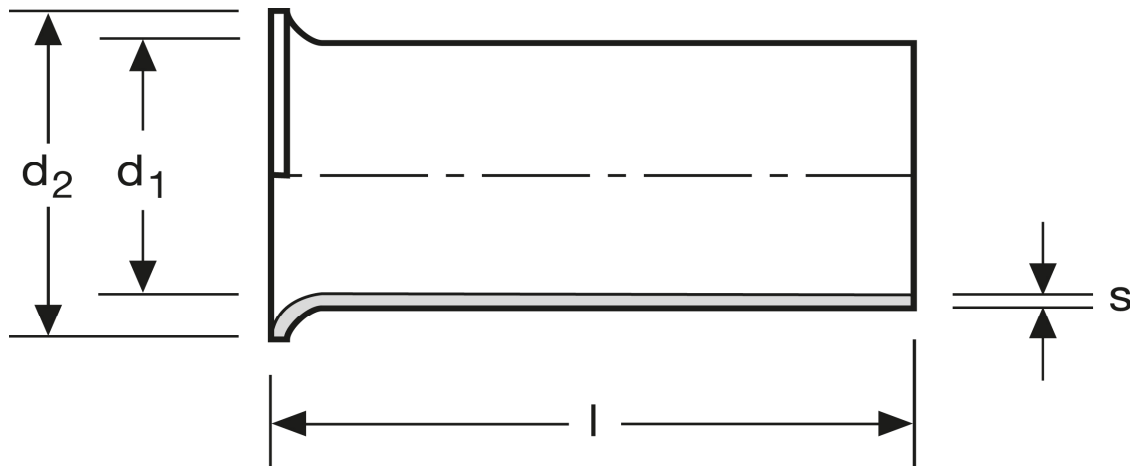
## Aderendhülsen 1,5 mm<sup>2</sup> - 7 mm



Art.Nr.	Werkstoff	Oberfläche		
A 108070	Cu-ETP	galv. Sn	0,068/1000	1.000
	$l$	$d_1$	$d_2$	$s$
in mm:	7	1,8	2,8	0,15

Stand: 01.07.2014

## Cord end-sleeves 1,5 mm<sup>2</sup> - 7 mm



art.no.	material	surface		
A 108070	Cu-ETP	tin plated	0,068/1000	1.000
	$l$	$d_1$	$d_2$	$s$
in mm:	7	1,8	2,8	0,15

Date: 01.07.2014