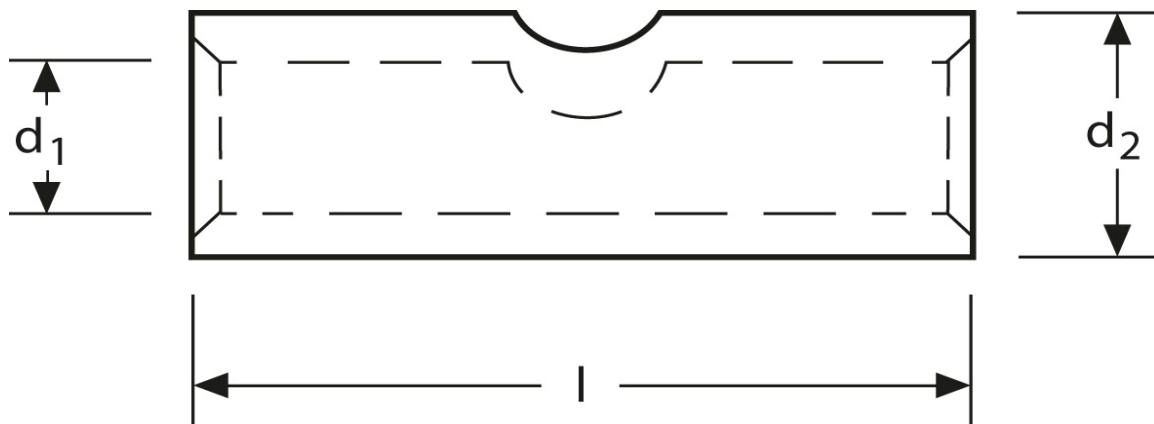


**Stoßverbinder aus Reinnickel**  
 16 mm<sup>2</sup>

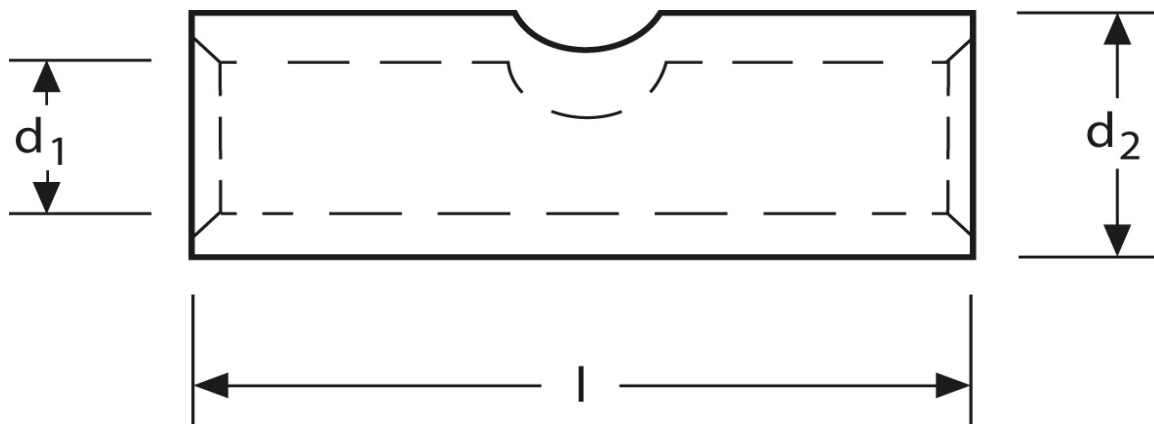


<b>Art.Nr.</b>	<b>Werkstoff</b>		
K332016 NI	Reinnickel	5,10/1000	50

	<b>d<sub>1</sub></b>	<b>l</b>	<b>d<sub>2</sub></b>	<b>s</b>
<b>in mm:</b>	5,5	30	7,5	1

Stand: 08.08.2014

**Butt - connectors, nickel**  
 16 mm<sup>2</sup>



part no.	material			
K332016 NI	high grade nickel	5,10/1000	50	
	$d_1$	$l$	$d_2$	$s$
in mm:	5,5	30	7,5	1

Stand: 08.08.2014