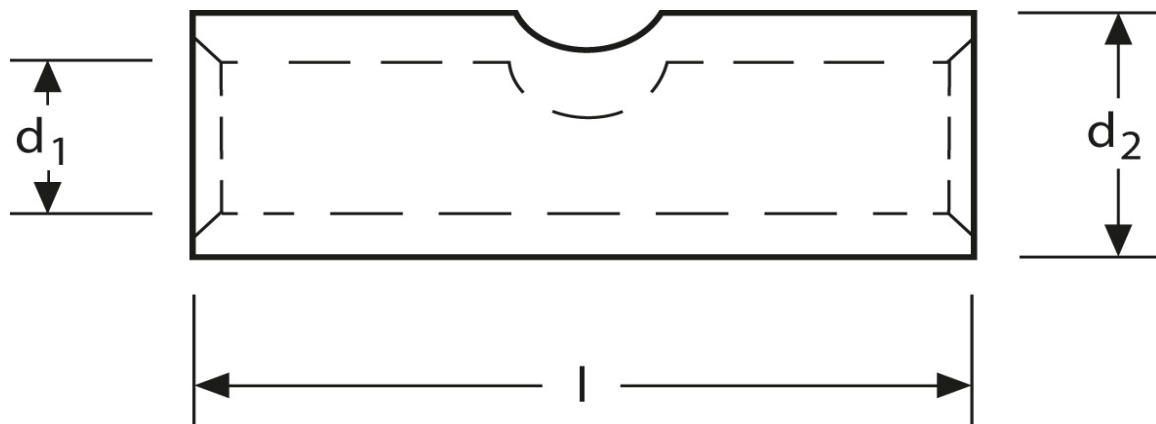
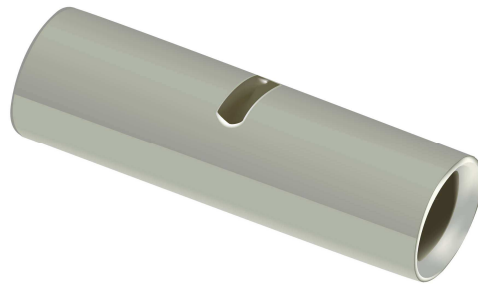


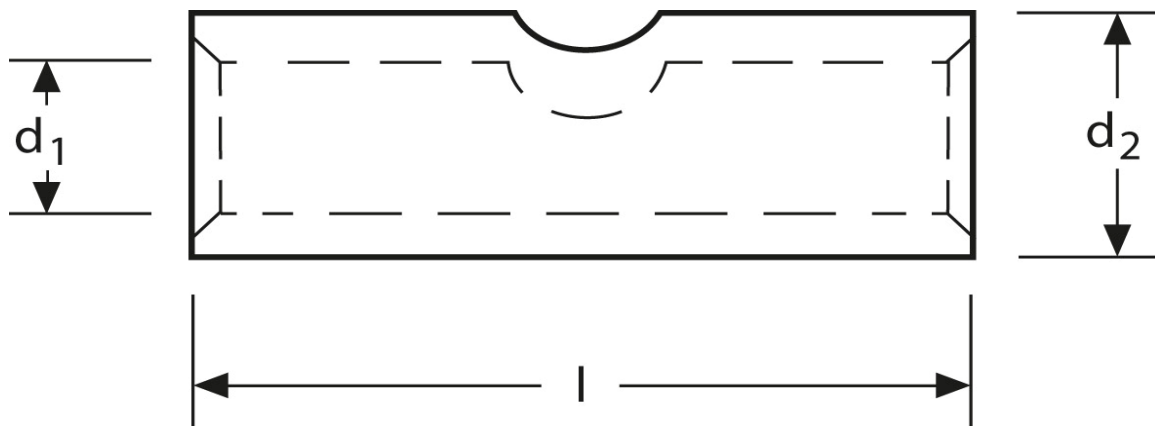
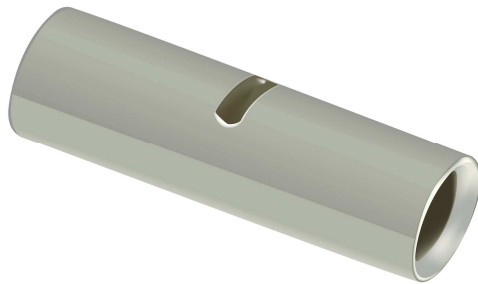
## Stoßverbinder 16 mm<sup>2</sup>



Art.Nr.	Werkstoff	Oberfläche		
K 332016	E-CU	galv. Sn	5,50 / 1000	500
	$d_1$	$l$	$d_2$	$s$
in mm:	5,8	26	8,2	1,2

Stand: 07.08.2014

## Butt - connectors 16 mm<sup>2</sup>



part no.	material	surface		
K 332016	E-CU	tin-plated	5,50 / 1000	500
	<b>d<sub>1</sub></b>	<b>l</b>	<b>d<sub>2</sub></b>	<b>s</b>
<b>in mm:</b>	5,8	26	8,2	1,2

date: 07.08.2014