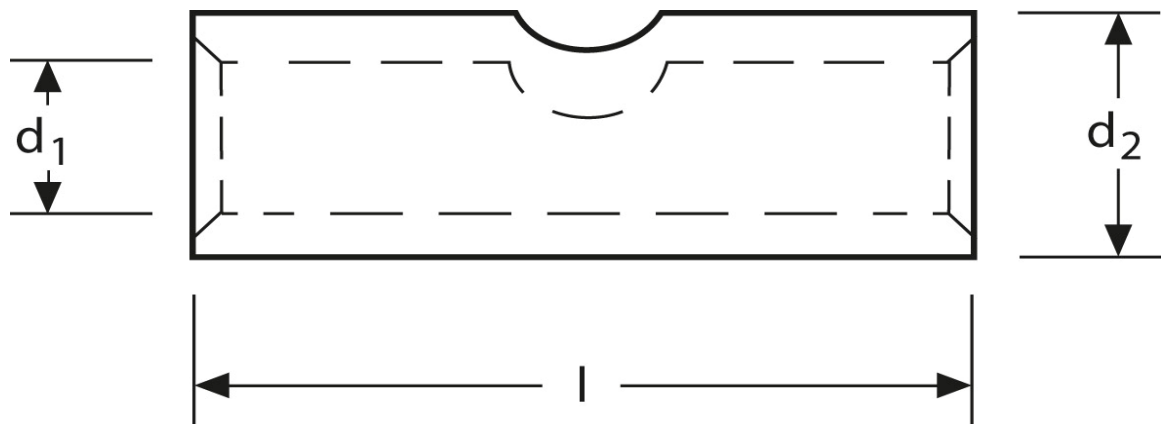
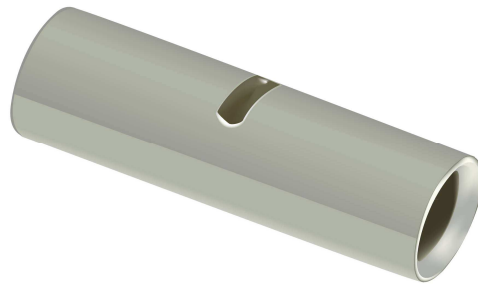


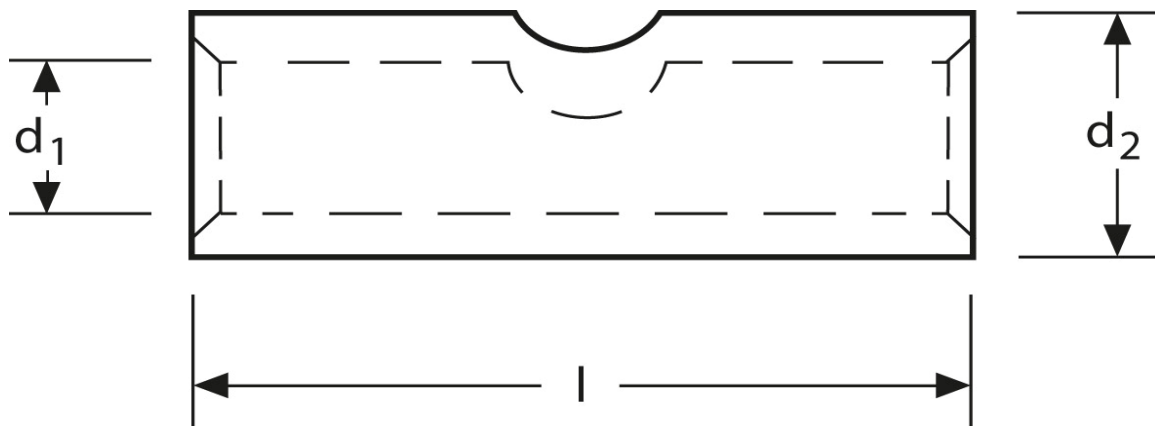
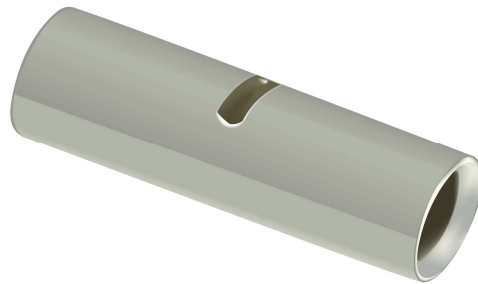
## Stoßverbinder 0,5 mm<sup>2</sup>



Art.Nr.	Werkstoff	Oberfläche		
K 332000	E-CU	galv. Sn	0,29 / 1000	1.000
	$d_1$	$l$	$d_2$	$s$
in mm:	1,2	12	2,0	0,4

Stand: 07.08.2014

**Butt - connectors**  
 0,5 mm<sup>2</sup>



part no.	material	surface		
K 332000	E-CU	tin-plated	0,29 / 1000	1.000
	$d_1$	$l$	$d_2$	$s$
in mm:	1,2	12	2,0	0,4

date: 07.08.2014