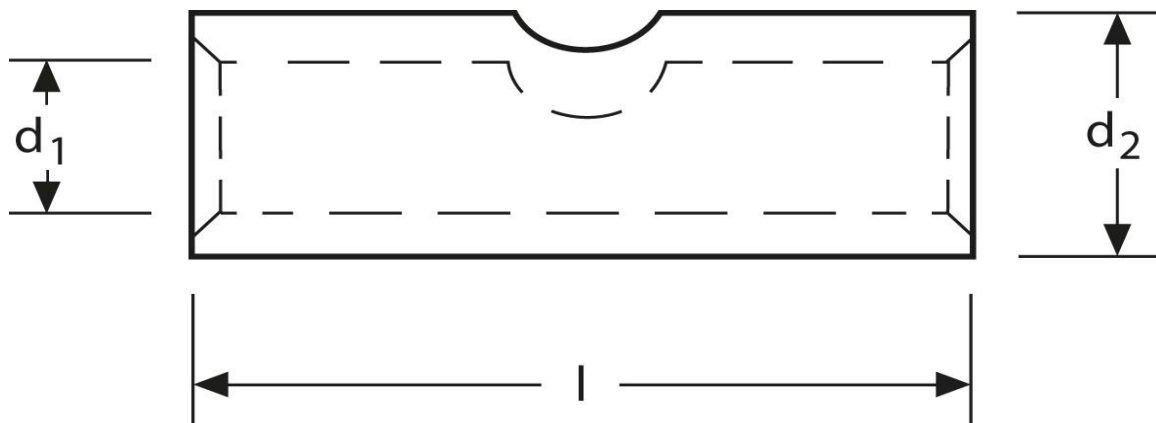


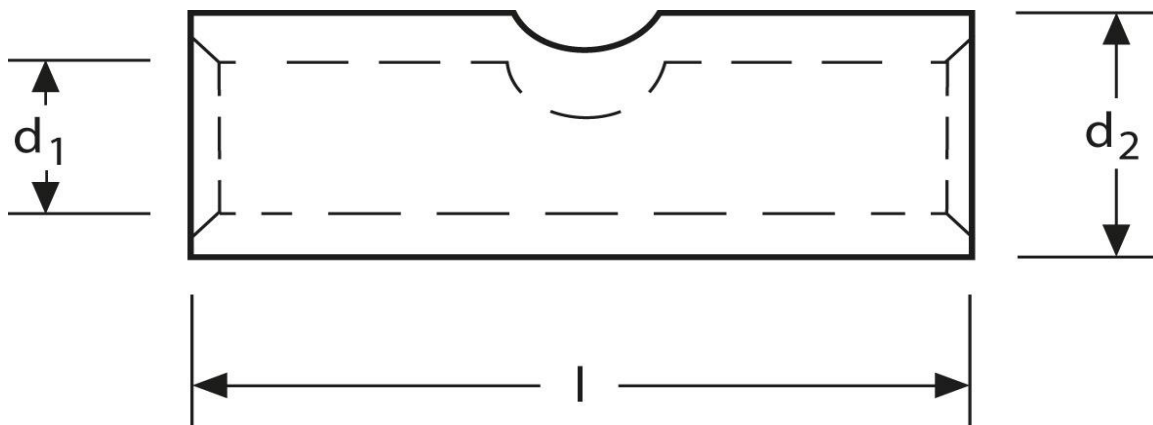
Stoßverbinder 0,75 mm²



Art.Nr.	Werkstoff	Oberfläche		
K 332000.1	E-CU	galv. Sn	0,60 / 1000	1.000
	d₁	l	d₂	s
in mm:	1,3	14	2,8	0,75

Stand: 27.02.2017

Butt - connectors
0,75 mm²



part no.	material	surface		
K 332000.1	E-CU	tin-plated	0,60 / 1000	1.000
	d_1	l	d_2	s
in mm:	1,3	14	2,8	0,75

date: 27.02.2017