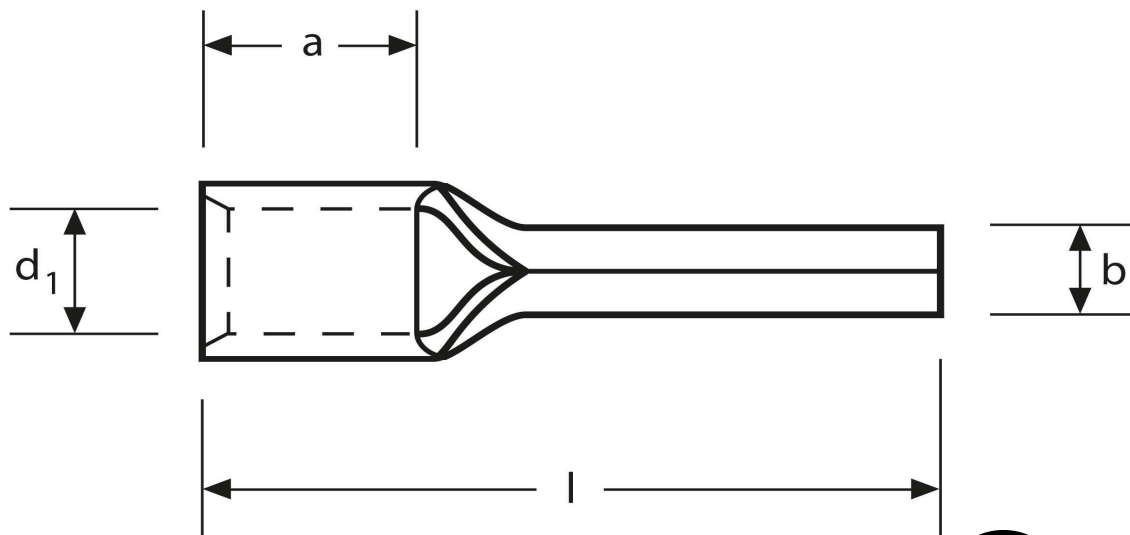
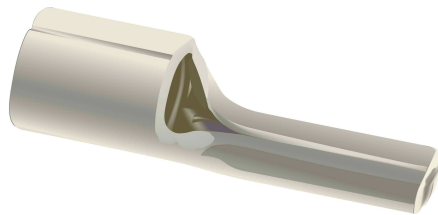


Quetschkabelschuhe

Stiftform

70 mm²

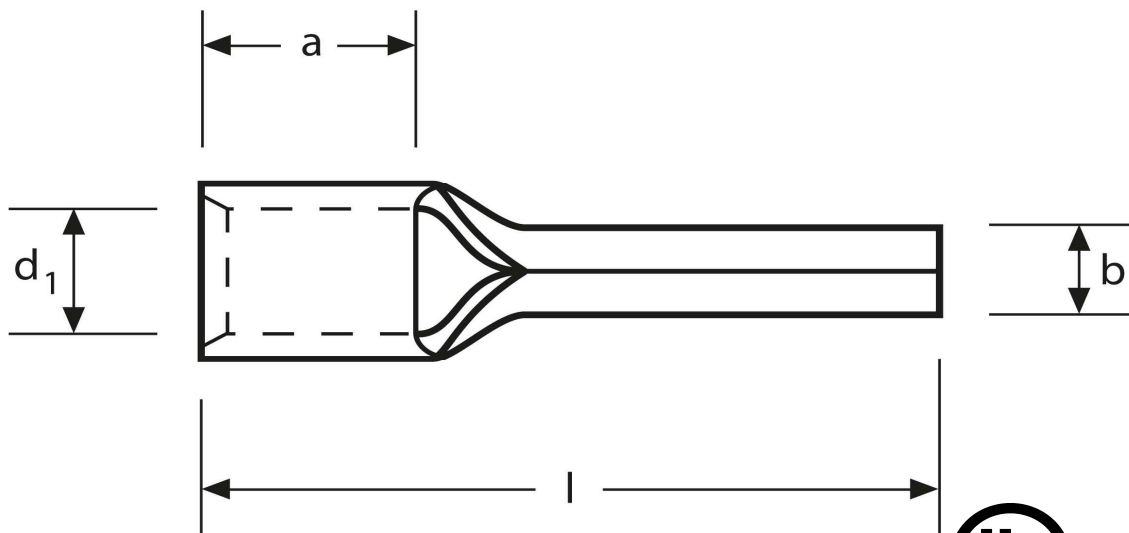
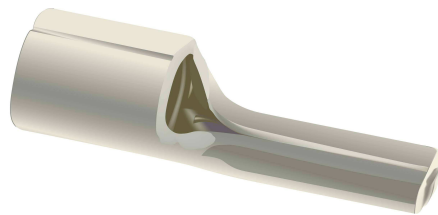


Art.Nr.	Werkstoff	Oberfläche		
K 331070	E-CU	galv. Sn	29,20 / 1000	100
	b	d₁	l	
in mm:	11,0	11,4	55,0	
	a	s		
in mm:	24,0	2,0		

Stand: 07.08.2014

Solderless terminals

pin-type
 70 mm²



part no.	material	surface		
K 331070	E-CU	tin-plated	29,20 / 1000	100
	b	d₁	l	
in mm:	11,0	11,4	55,0	
	a	s		
in mm:	24,0	2,0		

date: 07.08.2014