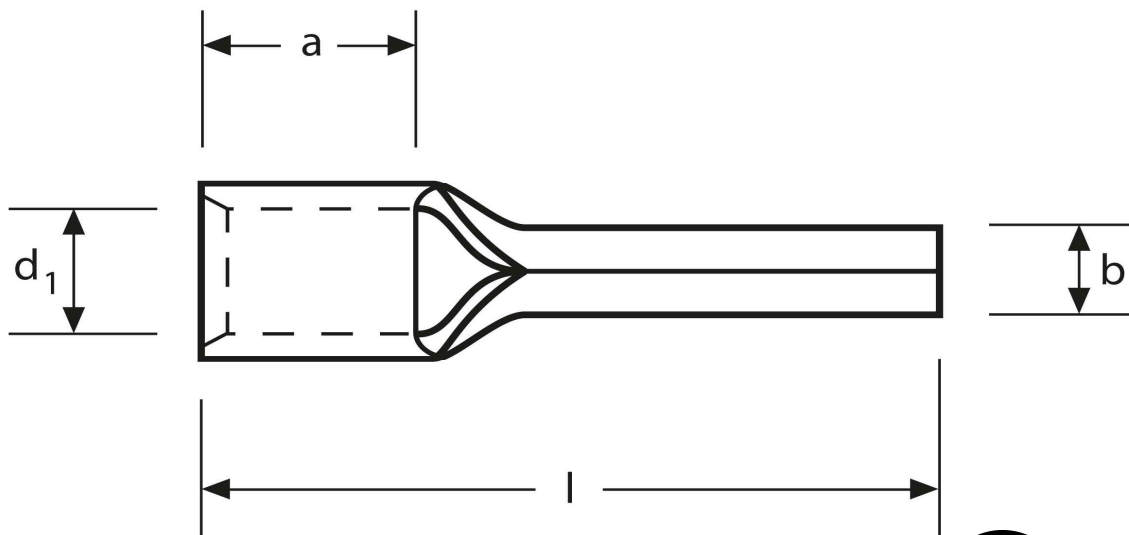
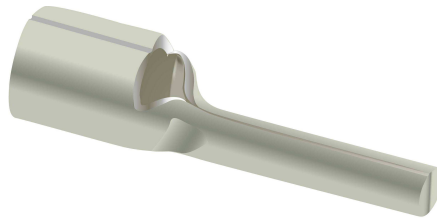


Quetschkabelschuhe

Stiftform - zylindrisch

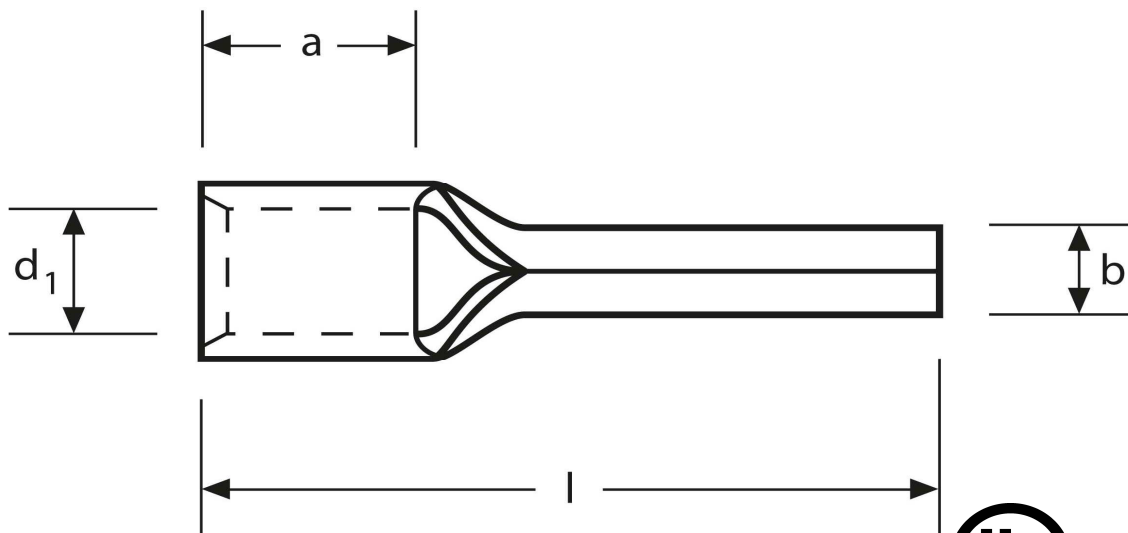
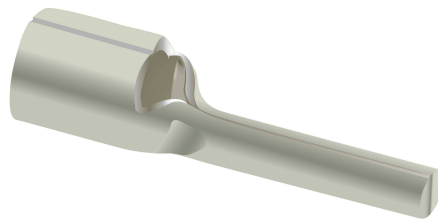
1,5 mm²



Art.Nr.	Werkstoff	Oberfläche		
K 331001	E-CU	galv. Sn	0,64 / 1000	1.000
	b	d₁	l	
in mm:	1,9	1,7	16,8	
	a	s		
in mm:	4,8	0,75		

Stand: 07.08.2014

Solderless terminals
 pin-type cylindric
 1,5 mm²



part no.	material	surface		
K 331001	E-CU	tin-plated	0,64 / 1000	1.000
	b	d₁	l	
in mm:	1,9	1,7	16,8	
	a	s		
in mm:	4,8	0,75		

date: 07.08.2014