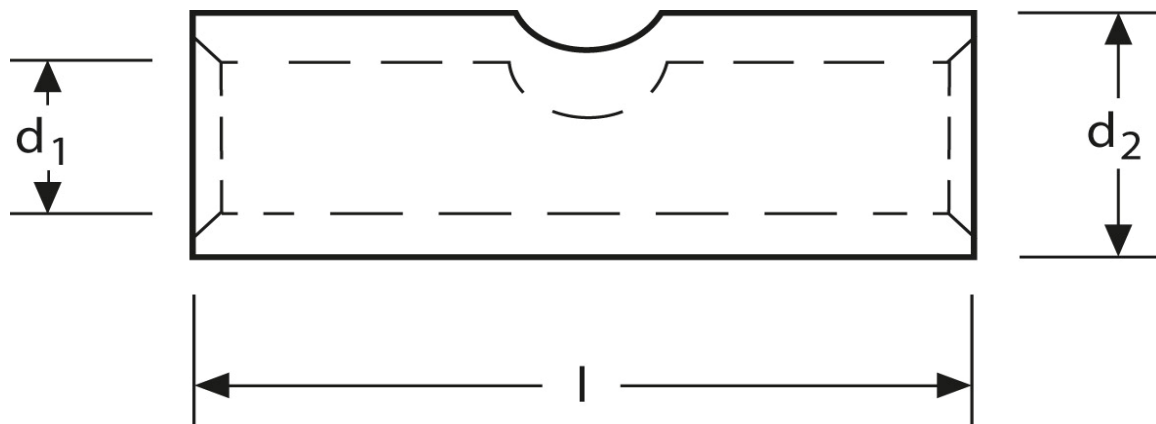


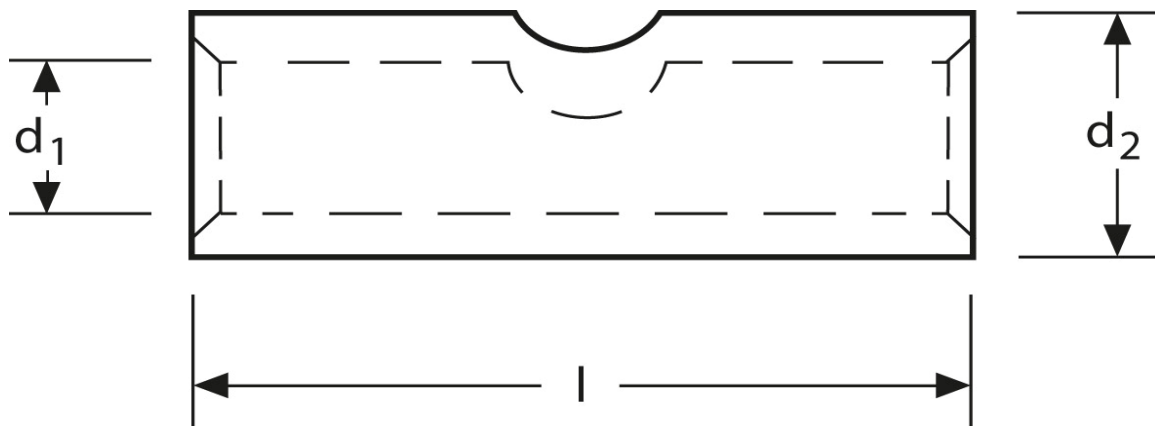
**Pressverbinder**  
625 mm<sup>2</sup>



Art.Nr.	Werkstoff	Oberfläche		
K 3132625	E-CU	galv. Sn	894,0/1000	1
	$d_1$	$l$	$d_2$	Kennziffer
in mm:	34,5	160	44,0	44

Stand: 29.09.2014

## Compression joints 625 mm<sup>2</sup>



part no.	material	surface		
K 3132625	E-CU	tin-plated	894,0/1000	1
	$d_1$	$l$	$d_2$	code
in mm:	34,5	160	44,0	44

date: 29.09.2014