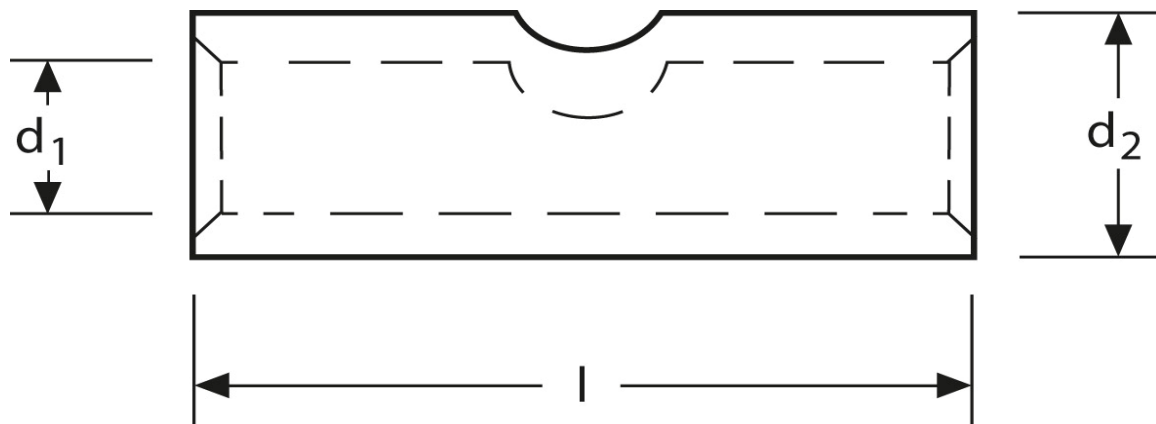


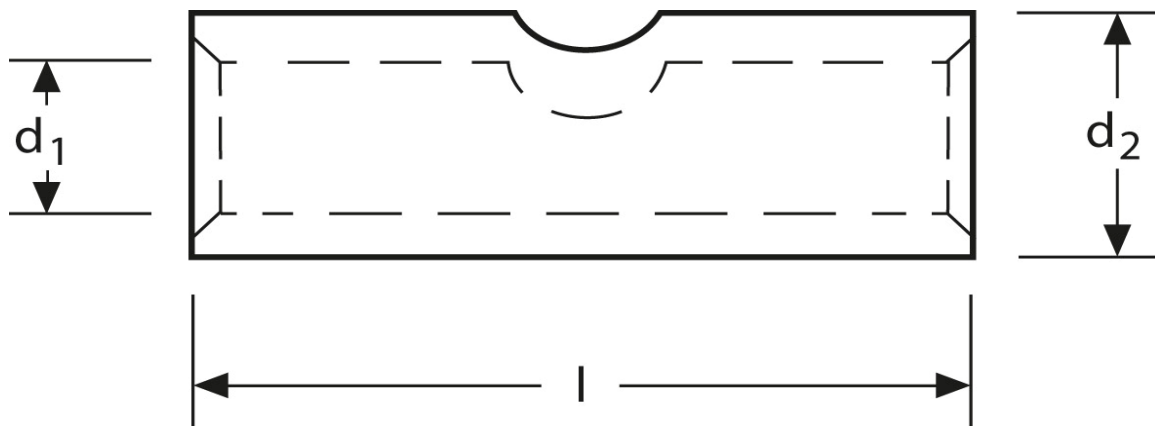
**Pressverbinder**  
 120 mm<sup>2</sup>



Art.Nr.	Werkstoff	Oberfläche		
K 3132120	E-CU	galv. Sn	97,0 / 1000	25
	<b>d<sub>1</sub></b>	<b>l</b>	<b>d<sub>2</sub></b>	<b>Kennziffer</b>
<b>in mm:</b>	15,5	70	21,0	20

Stand: 29.09.2014

## Compression joints 120 mm<sup>2</sup>



part no.	material	surface		
K 3132120	E-CU	tin-plated	97,0 / 1000	25
	<b>d<sub>1</sub></b>	<b>l</b>	<b>d<sub>2</sub></b>	<b>code</b>
<b>in mm:</b>	15,5	70	21,0	20

date: 29.09.2014